

Datasheet for ABIN7183840

anti-MRPL32 antibody**2** Images[Go to Product page](#)

Overview

Quantity:	100 µL
Target:	MRPL32
Reactivity:	Human
Host:	Rabbit
Clonality:	Polyclonal
Conjugate:	This MRPL32 antibody is un-conjugated
Application:	Western Blotting (WB), ELISA, Immunofluorescence (IF)

Product Details

Immunogen:	Synthesized peptide derived from internal of Human MRPL32.
Isotype:	IgG
Cross-Reactivity:	Human
Purification:	The antibody was affinity-purified from rabbit antiserum by affinity-chromatography using epitope-specific immunogen.

Target Details

Target:	MRPL32
Alternative Name:	MRPL32 (MRPL32 Products)
Background:	Background: Mammalian mitochondrial ribosomal proteins are encoded by nuclear genes and help in protein synthesis within the mitochondrion. Mitochondrial ribosomes (mitoribosomes) consist of a small 28S subunit and a large 39S subunit. They have an estimated 75 % protein to

Target Details

rRNA composition compared to prokaryotic ribosomes, where this ratio is reversed. Another difference between mammalian mitoribosomes and prokaryotic ribosomes is that the latter contain a 5S rRNA. Among different species, the proteins comprising the mitoribosome differ greatly in sequence, and sometimes in biochemical properties, which prevents easy recognition by sequence homology. This gene encodes a 39S subunit protein that belongs to the L32 ribosomal protein family. A pseudogene corresponding to this gene is found on chromosome Xp.

Suzuki T., J. Biol. Chem. 276:21724-21736(2001).

The MGC Project Team, Genome Res. 14:2121-2127(2004).

Kenmochi N., Genomics 77:65-70(2001).

Aliases: MRPL32 antibody, HSPC283 antibody, 39S ribosomal protein L32 antibody, mitochondrial antibody, L32mt antibody, MRP-L32 antibody, Mitochondrial large ribosomal subunit protein bL32m antibody

UniProt: [Q9BYC8](#)

Application Details

Application Notes: WB:1:500-1:3000, IF:1:100-1:500,

Restrictions: For Research Use only

Handling

Format: Liquid

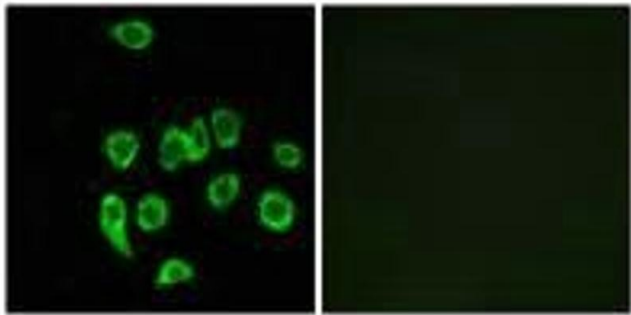
Buffer: Rabbit IgG in phosphate buffered saline (without Mg²⁺ and Ca²⁺), pH 7.4, 150 mM NaCl, 0.02 % sodium azide and 50 % glycerol.

Preservative: Sodium azide

Precaution of Use: This product contains Sodium azide: a POISONOUS AND HAZARDOUS SUBSTANCE which should be handled by trained staff only.

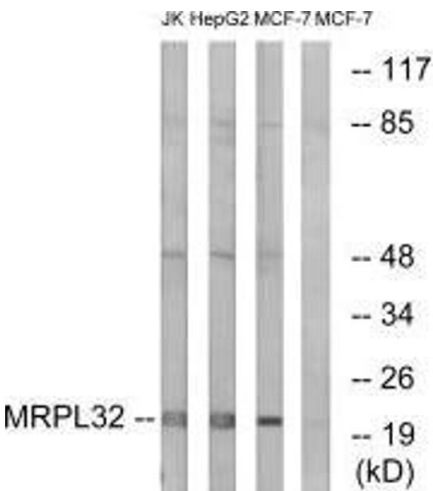
Storage: -20 °C, -80 °C

Storage Comment: Upon receipt, store at -20°C or -80°C. Avoid repeated freeze.



Immunofluorescence

Image 1. Immunofluorescence analysis of A549 cells, using MRPL32 antibody.



Western Blotting

Image 2. Western blot analysis of extracts from Jurkat cells, MCF-7 cells and HepG2 cells, using MRPL32 antibody.