

Datasheet for ABIN7183848
anti-MRPS18C antibody

3 Images

[Go to Product page](#)

Overview

Quantity:	100 µL
Target:	MRPS18C
Reactivity:	Human
Host:	Rabbit
Clonality:	Polyclonal
Conjugate:	This MRPS18C antibody is un-conjugated
Application:	ELISA, Western Blotting (WB), Immunohistochemistry (IHC), Immunofluorescence (IF)

Product Details

Immunogen:	Synthesized peptide derived from internal of Human MRPS18C.
Isotype:	IgG
Cross-Reactivity:	Human, Mouse
Purification:	The antibody was affinity-purified from rabbit antiserum by affinity-chromatography using epitope-specific immunogen.

Target Details

Target:	MRPS18C
Alternative Name:	MRPS18C (MRPS18C Products)
Background:	Background: Mammalian mitochondrial ribosomal proteins are encoded by nuclear genes and help in protein synthesis within the mitochondrion. Mitochondrial ribosomes (mitoribosomes) consist of a small 28S subunit and a large 39S subunit. They have an estimated 75 % protein to

Target Details

rRNA composition compared to prokaryotic ribosomes, where this ratio is reversed. Another difference between mammalian mitoribosomes and prokaryotic ribosomes is that the latter contain a 5S rRNA. Among different species, the proteins comprising the mitoribosome differ greatly in sequence, and sometimes in biochemical properties, which prevents easy recognition by sequence homology. This gene encodes a 28S subunit protein that belongs to the ribosomal protein S18P family. The encoded protein is one of three that has significant sequence similarity to bacterial S18 proteins. The primary sequences of the three human mitochondrial S18 proteins are no more closely related to each other than they are to the prokaryotic S18 proteins. Pseudogenes corresponding to this gene are found on chromosomes 8p, 12p, 15q, and 22q.

Lai C.-H., Genome Res. 10:703-713(2000).

The MGC Project Team, Genome Res. 14:2121-2127(2004).

Koc E.C., J. Biol. Chem. 276:19363-19374(2001).

Aliases: MRPS18C antibody, CGI-134 antibody, 28S ribosomal protein S18c antibody, mitochondrial antibody, MRP-S18-c antibody, Mrps18-c antibody, S18mt-c antibody, 28S ribosomal protein S18-1 antibody, mitochondrial antibody, MRP-S18-1 antibody, Mitochondrial small ribosomal subunit protein bS18c antibody, Mitochondrial small ribosomal subunit protein bS18m antibody

UniProt: [Q9Y3D5](#)

Application Details

Application Notes: WB:1:500-1:3000, IHC:1:50-1:100, IF:1:100-1:500,

Restrictions: For Research Use only

Handling

Format: Liquid

Buffer: Rabbit IgG in phosphate buffered saline (without Mg²⁺ and Ca²⁺), pH 7.4, 150 mM NaCl, 0.02 % sodium azide and 50 % glycerol.

Preservative: Sodium azide

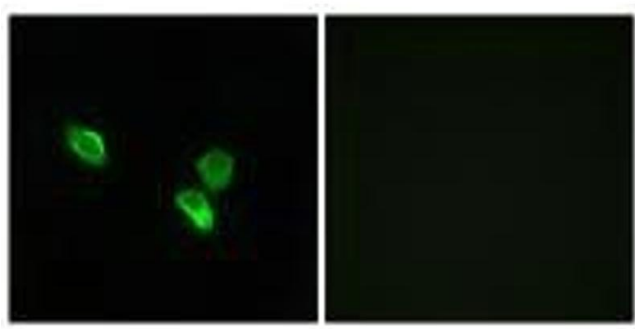
Precaution of Use: This product contains Sodium azide: a POISONOUS AND HAZARDOUS SUBSTANCE which should be handled by trained staff only.

Storage: -20 °C, -80 °C

Handling

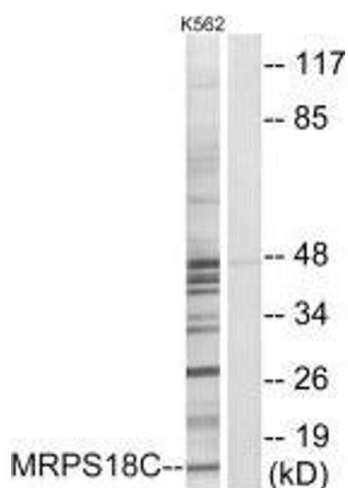
Storage Comment: Upon receipt, store at -20°C or -80°C. Avoid repeated freeze.

Images



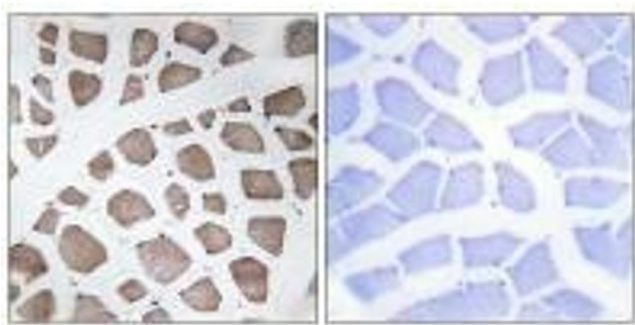
Immunofluorescence

Image 1. Immunofluorescence analysis of MCF-7 cells, using MRPS18C antibody.



Western Blotting

Image 2. Western blot analysis of extracts from K562 cells, using MRPS18C antibody.



Immunohistochemistry

Image 3. Immunohistochemistry analysis of paraffin-embedded human skeletal muscle tissue using MRPS18C antibody.