

Datasheet for ABIN7183867

anti-MX2 antibody**1** Image[Go to Product page](#)

Overview

Quantity:	100 µL
Target:	MX2
Reactivity:	Human
Host:	Rabbit
Clonality:	Polyclonal
Application:	ELISA, Western Blotting (WB)

Product Details

Immunogen:	Synthesized peptide derived from Internal of Human MX2.
Isotype:	IgG
Cross-Reactivity:	Human
Purification:	The antibody was affinity-purified from rabbit antiserum by affinity-chromatography using epitope-specific immunogen.

Target Details

Target:	MX2
Alternative Name:	MX2 (MX2 Products)
Background:	Background: Interferon-induced dynamin-like GTPase with potent antiviral activity against human immunodeficiency virus type 1 (HIV-1). Acts by targeting the viral capsid and affects the nuclear uptake and/or stability of the HIV-1 replication complex and the subsequent chromosomal integration of the proviral DNA. Exhibits antiviral activity also against simian

Target Details

immunodeficiency virus (SIV-mnd). May play a role in regulating nucleocytoplasmic transport and cell-cycle progression.

Aebi M., Mol. Cell. Biol. 9:5062-5072(1989).

Hattori M., Nature 405:311-319(2000).

Mural R.J., Submitted (SEP-2005) to the EMBL/GenBank/DDBJ databases.

Aliases: Interferon induced GTP binding protein Mx2 antibody, Interferon regulated resistance GTP binding protein MXB antibody, Interferon-induced GTP-binding protein Mx2 antibody, Interferon-regulated resistance GTP-binding protein MxB antibody, MX 2 antibody, MX dynamin like GTPase 2 antibody, Mx2 antibody, MX2_HUMAN antibody, MXB antibody, Myxovirus (influenza virus) resistance 2 antibody, Myxovirus resistance 2 antibody, Myxovirus resistance protein 2 antibody, p78 related protein antibody, p78-related protein antibody, Second interferon induced protein p78 antibody

UniProt: [P20592](#)

Application Details

Application Notes: WB:1:500-1:3000,

Restrictions: For Research Use only

Handling

Format: Liquid

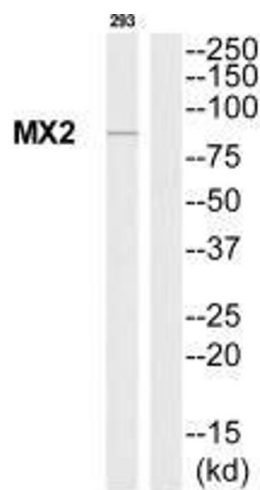
Buffer: Rabbit IgG in phosphate buffered saline (without Mg²⁺ and Ca²⁺), pH 7.4, 150 mM NaCl, 0.02 % sodium azide and 50 % glycerol.

Preservative: Sodium azide

Precaution of Use: This product contains Sodium azide: a POISONOUS AND HAZARDOUS SUBSTANCE which should be handled by trained staff only.

Storage: -20 °C, -80 °C

Storage Comment: Upon receipt, store at -20°C or -80°C. Avoid repeated freeze.



Western Blotting

Image 1. Western blot analysis of extracts from 293 cells, using MX2 antibody.