



[Go to Product page](#)

Datasheet for ABIN7183941

anti-MAPK6 antibody

2 Images

Overview

Quantity:	100 µL
Target:	MAPK6
Reactivity:	Human
Host:	Rabbit
Clonality:	Polyclonal
Conjugate:	This MAPK6 antibody is un-conjugated
Application:	Western Blotting (WB), ELISA, Immunofluorescence (IF)

Product Details

Immunogen:	Synthesized peptide derived from internal of Human p97 MAPK.
Isotype:	IgG
Cross-Reactivity:	Human, Mouse, Rat
Purification:	The antibody was affinity-purified from rabbit antiserum by affinity-chromatography using epitope-specific immunogen.

Target Details

Target:	MAPK6
Alternative Name:	MAPK6 (MAPK6 Products)
Background:	Background: Atypical MAPK protein. Phosphorylates microtubule-associated protein 2 (MAP2) and MAPKAPK5. The precise role of the complex formed with MAPKAPK5 is still unclear, but the complex follows a complex set of phosphorylation events: upon interaction with atypical

Target Details

MAPKAPK5, ERK3/MAPK6 is phosphorylated at Ser-189 and then mediates phosphorylation and activation of MAPKAPK5, which in turn phosphorylates ERK3/MAPK6. May promote entry in the cell cycle By similarity.

Zhu A.X., Mol. Cell. Biol. 14:8202-8211(1994).

Meloche S., Oncogene 13:1575-1579(1996).

The MGC Project Team, Genome Res. 14:2121-2127(2004)

Aliases: ERK-3 antibody, ERK3 antibody, Extracellular signal regulated kinase 3 antibody, Extracellular signal regulated kinase p97 antibody, Extracellular signal-regulated kinase 3 antibody, HsT17250 antibody, MAP kinase 6 antibody, MAP kinase isoform p97 antibody, MAPK 6 antibody, MAPK6 antibody, Mitogen activated protein kinase 6 antibody, Mitogen-activated protein kinase 6 antibody, MK06_HUMAN antibody, p97 MAPK antibody, p97-MAPK antibody, PRKM6 antibody, Protein kinase mitogen activated 5 antibody, Protein kinase mitogen activated 6 antibody

UniProt: [Q16659](#)

Pathways: [MAPK Signaling](#), [Neurotrophin Signaling Pathway](#), [Regulation of Muscle Cell Differentiation](#), [Hepatitis C](#)

Application Details

Application Notes: WB:1:500-1:3000, IF:1:100-1:500,

Restrictions: For Research Use only

Handling

Format: Liquid

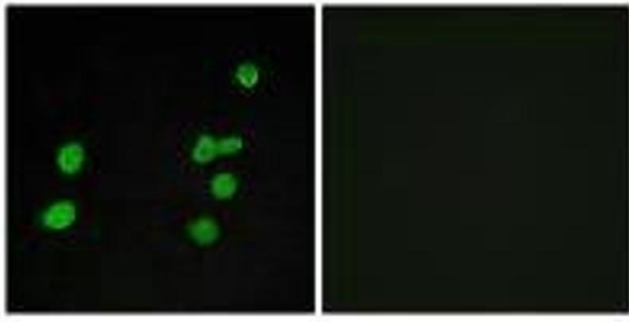
Buffer: Rabbit IgG in phosphate buffered saline (without Mg²⁺ and Ca²⁺), pH 7.4, 150 mM NaCl, 0.02 % sodium azide and 50 % glycerol.

Preservative: Sodium azide

Precaution of Use: This product contains Sodium azide: a POISONOUS AND HAZARDOUS SUBSTANCE which should be handled by trained staff only.

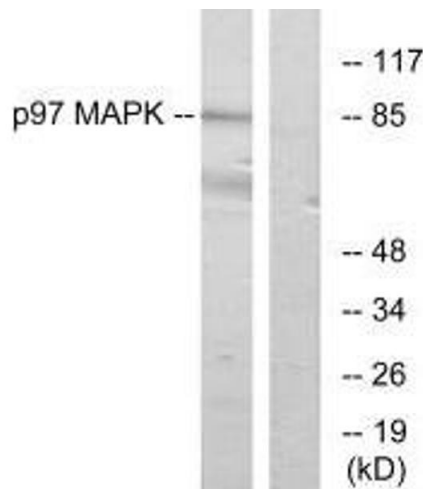
Storage: -20 °C,-80 °C

Storage Comment: Upon receipt, store at -20°C or -80°C. Avoid repeated freeze.



Immunofluorescence

Image 1. Immunofluorescence analysis of MCF-7 cells, using p97 MAPK antibody.



Western Blotting

Image 2. Western blot analysis of extracts from K562 cells, using p97 MAPK antibody.