



Datasheet for ABIN7183958

anti-PFDN1 antibody



[Go to Product page](#)

1 Image

Overview

Quantity:	100 µL
Target:	PFDN1
Reactivity:	Human
Host:	Rabbit
Clonality:	Polyclonal
Conjugate:	This PFDN1 antibody is un-conjugated
Application:	Western Blotting (WB), ELISA

Product Details

Immunogen:	Synthesized peptide derived from internal of Human PFDN1.
Isotype:	IgG
Cross-Reactivity:	Human, Mouse
Purification:	The antibody was affinity-purified from rabbit antiserum by affinity-chromatography using epitope-specific immunogen.

Target Details

Target:	PFDN1
Alternative Name:	PFDN1 (PFDN1 Products)
Background:	Background: Binds specifically to cytosolic chaperonin (c-CPN) and transfers target proteins to it. Binds to nascent polypeptide chain and promotes folding in an environment in which there are many competing pathways for nonnative proteins.

Target Details

Vainberg I.E., Cell 93:863-873(1998).

Totoki Y., Submitted (APR-2005) to the EMBL/GenBank/DDBJ databases.

The MGC Project Team, Genome Res. 14:2121-2127(2004).

Aliases: PDF antibody, PFD1 antibody, PFD1_HUMAN antibody, pfdn1 antibody, Prefoldin 1 antibody, Prefoldin subunit 1 antibody

UniProt: [O60925](#)

Pathways: [Unfolded Protein Response](#)

Application Details

Application Notes: WB:1:500-1:3000,

Restrictions: For Research Use only

Handling

Format: Liquid

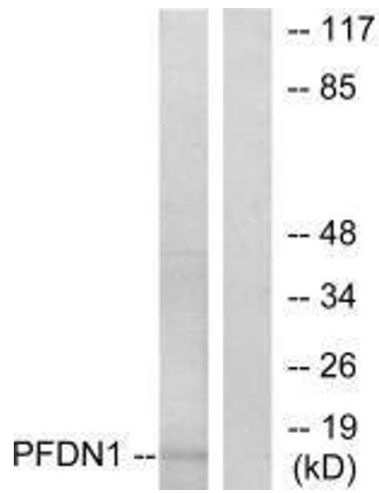
Buffer: Rabbit IgG in phosphate buffered saline (without Mg²⁺ and Ca²⁺), pH 7.4, 150 mM NaCl, 0.02 % sodium azide and 50 % glycerol.

Preservative: Sodium azide

Precaution of Use: This product contains Sodium azide: a POISONOUS AND HAZARDOUS SUBSTANCE which should be handled by trained staff only.

Storage: -20 °C,-80 °C

Storage Comment: Upon receipt, store at -20°C or -80°C. Avoid repeated freeze.



Western Blotting

Image 1. Western blot analysis of extracts from RAW264.7 cells, using PFDN1 antibody.