

Datasheet for ABIN7184040

anti-RAD21 antibody**1** Image[Go to Product page](#)

Overview

Quantity:	100 µL
Target:	RAD21
Reactivity:	Human
Host:	Rabbit
Clonality:	Polyclonal
Conjugate:	This RAD21 antibody is un-conjugated
Application:	Western Blotting (WB), ELISA

Product Details

Immunogen:	Synthesized peptide derived from internal of Human RAD21.
Isotype:	IgG
Cross-Reactivity:	Human, Mouse
Purification:	The antibody was affinity-purified from rabbit antiserum by affinity-chromatography using epitope-specific immunogen.

Target Details

Target:	RAD21
Alternative Name:	RAD21 (RAD21 Products)
Background:	Background: Cleavable component of the cohesin complex, involved in chromosome cohesion during cell cycle, in DNA repair, and in apoptosis. The cohesin complex is required for the cohesion of sister chromatids after DNA replication. The cohesin complex apparently forms a

Target Details

large proteinaceous ring within which sister chromatids can be trapped. At metaphase-anaphase transition, this protein is cleaved by separase/ESPL1 and dissociates from chromatin, allowing sister chromatids to segregate. The cohesin complex may also play a role in spindle pole assembly during mitosis. Also plays a role in apoptosis, via its cleavage by caspase-3/CASP3 or caspase-7/CASP7 during early steps of apoptosis: the C-terminal 64 kDa cleavage product may act as a nuclear signal to initiate cytoplasmic events involved in the apoptotic pathway.

McKay M.J., Genomics 36:305-315(1996).

Sadano H., Biochem. Biophys. Res. Commun. 267:418-422(2000).

Nomura N., DNA Res. 1:223-229(1994).

Aliases: CDLS4 antibody, Double-strand-break repair protein rad21 homolog antibody, hHR21 antibody, HR21 antibody, HRAD21 antibody, KIAA0078 antibody, MCD1 antibody, Nuclear matrix protein 1 antibody, NXP-1 antibody, NXP1 antibody, Protein involved in DNA double-strand break repair antibody, RAD21 antibody, RAD21 homolog (S. pombe) antibody, RAD21 homolog antibody, RAD21_HUMAN antibody, Scc1 antibody, SCC1 homolog antibody

UniProt: [O60216](#)

Pathways: [Positive Regulation of Endopeptidase Activity](#)

Application Details

Application Notes: WB:1:500-1:3000,

Restrictions: For Research Use only

Handling

Format: Liquid

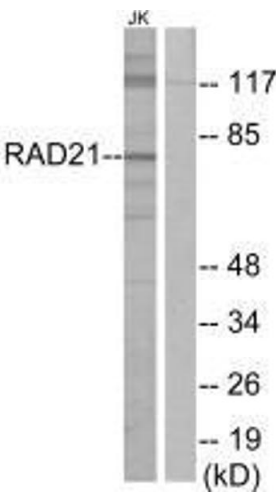
Buffer: Rabbit IgG in phosphate buffered saline (without Mg²⁺ and Ca²⁺), pH 7.4, 150 mM NaCl, 0.02 % sodium azide and 50 % glycerol.

Preservative: Sodium azide

Precaution of Use: This product contains Sodium azide: a POISONOUS AND HAZARDOUS SUBSTANCE which should be handled by trained staff only.

Storage: -20 °C,-80 °C

Storage Comment: Upon receipt, store at -20°C or -80°C. Avoid repeated freeze.



Western Blotting

Image 1. Western blot analysis of extracts from Jurkat cells, using RAD21 antibody.