

Datasheet for ABIN7184061
anti-RHOBTB2 antibody[Go to Product page](#)

1 Image

Overview

Quantity:	100 µL
Target:	RHOBTB2
Reactivity:	Human
Host:	Rabbit
Clonality:	Polyclonal
Conjugate:	This RHOBTB2 antibody is un-conjugated
Application:	ELISA, Western Blotting (WB)

Product Details

Immunogen:	Synthesized peptide derived from internal of Human RHBT2.
Isotype:	IgG
Cross-Reactivity:	Human, Mouse
Purification:	The antibody was affinity-purified from rabbit antiserum by affinity-chromatography using epitope-specific immunogen.

Target Details

Target:	RHOBTB2
Alternative Name:	RHOBTB2 (RHOBTB2 Products)
Background:	Background: The protein encoded by this gene is a small Rho GTPase and a candidate tumor suppressor. The encoded protein interacts with the cullin-3 protein, a ubiquitin E3 ligase necessary for mitotic cell division. This protein inhibits the growth and spread of some types of

Target Details

breast cancer. Three transcript variants encoding different isoforms have been found for this gene.

Ramos S., Gene 298:147-157(2002).

Nagase T., DNA Res. 5:277-286(1998).

Nakajima D., DNA Res. 9:99-106(2002).

Aliases: DBC 2 antibody, Deleted in breast cancer 2 antibody, Deleted in breast cancer 2 gene protein antibody, p83 antibody, RHBT2_HUMAN antibody, Rho related BTB domain containing 2 antibody, Rho related BTB domain containing protein 2 antibody, Rho-related BTB domain-containing protein 2 antibody, RHOBTB 2 antibody, Rhobtb2 antibody

UniProt: [Q9BYZ6](#)

Application Details

Application Notes: WB:1:500-1:3000,

Restrictions: For Research Use only

Handling

Format: Liquid

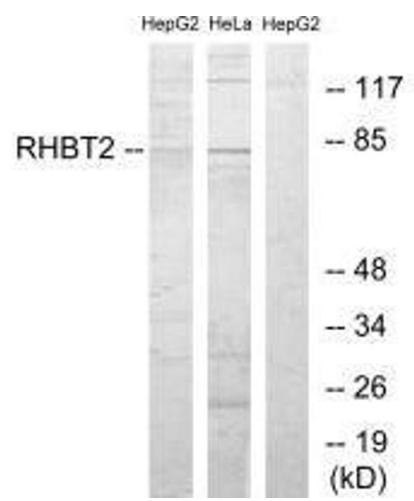
Buffer: Rabbit IgG in phosphate buffered saline (without Mg²⁺ and Ca²⁺), pH 7.4, 150 mM NaCl, 0.02 % sodium azide and 50 % glycerol.

Preservative: Sodium azide

Precaution of Use: This product contains Sodium azide: a POISONOUS AND HAZARDOUS SUBSTANCE which should be handled by trained staff only.

Storage: -20 °C, -80 °C

Storage Comment: Upon receipt, store at -20°C or -80°C. Avoid repeated freeze.



Western Blotting

Image 1. Western blot analysis of extracts from HepG2 cells and HeLa cells, using RHBT2 antibody.