

Datasheet for ABIN7184062

**anti-DLC1 antibody****2** Images[Go to Product page](#)

## Overview

Quantity:	100 µL
Target:	DLC1
Reactivity:	Human
Host:	Rabbit
Clonality:	Polyclonal
Conjugate:	This DLC1 antibody is un-conjugated
Application:	Immunohistochemistry (IHC), ELISA, Immunofluorescence (IF)

## Product Details

Immunogen:	Synthesized peptide derived from internal of Human RHG07.
Isotype:	IgG
Cross-Reactivity:	Human, Mouse
Purification:	The antibody was affinity-purified from rabbit antiserum by affinity-chromatography using epitope-specific immunogen.

## Target Details

Target:	DLC1
Alternative Name:	DLC1 ( <a href="#">DLC1 Products</a> )
Background:	Background: Functions as a GTPase-activating protein for the small GTPases RHOA, RHOB, RHOC and CDC42, terminating their downstream signaling. This induces morphological changes and detachment through cytoskeletal reorganization, playing a critical role in biological

## Target Details

processes such as cell migration and proliferation. Also functions in vivo as an activator of the phospholipase PLCD1. Active DLC1 increases cell migration velocity but reduces directionality.

Yuan B.Z., Cancer Res. 58:2196-2199(1998).

Nagase T., DNA Res. 7:347-355(2000).

Wilson P.J., Hum. Mutat. 15:156-165(2000).

Aliases: ARHGAP 7 antibody, ARHGAP7 antibody, Deleted in liver cancer 1 antibody, Deleted in liver cancer 1 protein antibody, DLC 1 antibody, Dlc-1 antibody, DLC1 antibody, DLC1 Rho GTPase activating protein antibody, FLJ21120 antibody, HP antibody, HP protein antibody, KIAA1723 antibody, p122 RhoGAP antibody, RHG07\_HUMAN antibody, Rho GTPase activating protein 7 antibody, Rho GTPase-activating protein 7 antibody, Rho type GTPase activating protein 7 antibody, Rho-type GTPase-activating protein 7 antibody, StAR related lipid transfer (START) domain containing 12 antibody, StAR related lipid transfer protein 12 antibody, StAR-related lipid transfer protein 12 antibody, STARD 12 antibody, StARD12 antibody, START domain containing protein 12 antibody, START domain-containing protein 12 antibody

UniProt: [Q96QB1](#)

Pathways: [Tube Formation](#), [Positive Regulation of Endopeptidase Activity](#)

## Application Details

Application Notes: IHC:1:50-1:100, IF:1:100-1:500,

Restrictions: For Research Use only

## Handling

Format: Liquid

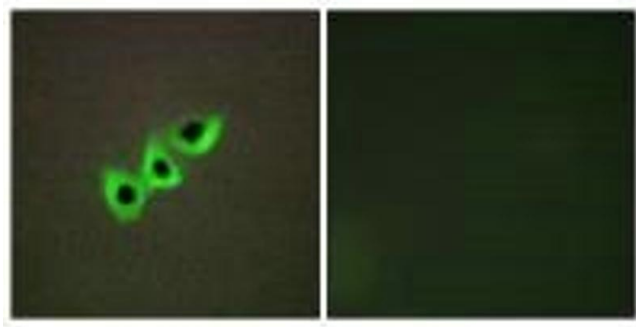
Buffer: Rabbit IgG in phosphate buffered saline (without Mg<sup>2+</sup> and Ca<sup>2+</sup>), pH 7.4, 150 mM NaCl, 0.02 % sodium azide and 50 % glycerol.

Preservative: Sodium azide

Precaution of Use: This product contains Sodium azide: a POISONOUS AND HAZARDOUS SUBSTANCE which should be handled by trained staff only.

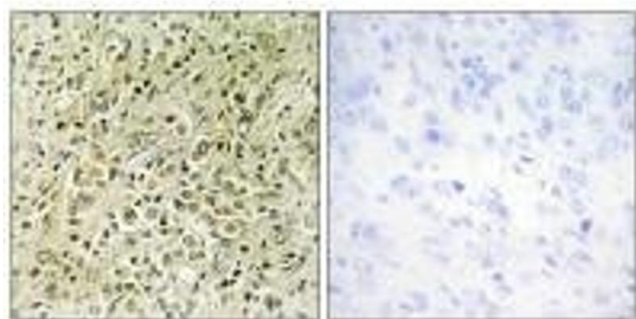
Storage: -20 °C, -80 °C

Storage Comment: Upon receipt, store at -20°C or -80°C. Avoid repeated freeze.



#### Immunofluorescence

**Image 1.** Immunofluorescence analysis of A549 cells, using RHG07 antibody.



#### Immunohistochemistry

**Image 2.** Immunohistochemistry analysis of paraffin-embedded human prostate carcinoma tissue, using RHG07 antibody.