

Datasheet for ABIN7184071

**anti-RIOK3 antibody**[Go to Product page](#)**1** Image

## Overview

Quantity:	100 µL
Target:	RIOK3
Reactivity:	Human
Host:	Rabbit
Clonality:	Polyclonal
Conjugate:	This RIOK3 antibody is un-conjugated
Application:	Western Blotting (WB), ELISA

## Product Details

Immunogen:	Synthesized peptide derived from internal of Human RIOK3.
Isotype:	IgG
Cross-Reactivity:	Human
Purification:	The antibody was affinity-purified from rabbit antiserum by affinity-chromatography using epitope-specific immunogen.

## Target Details

Target:	RIOK3
Alternative Name:	RIOK3 ( <a href="#">RIOK3 Products</a> )
Background:	Background: This gene was identified by the similarity of its product to the Aspergillus nidulans SUDD protein, an extragenic suppressor of the heat-sensitive bimD6 mutation that fails to attach properly to the spindle microtubules at a restrictive temperature. The specific function of

## Target Details

this gene has not yet been determined.

Anaya P., Gene 211:323-329(1998).

Nusbaum C., Nature 437:551-555(2005).

The MGC Project Team, Genome Res. 14:2121-2127(2004)

Aliases: Homolog of the Aspergillus nidulans sudD gene product antibody, RIO kinase 3 (yeast) antibody, RIO kinase 3 antibody, RIOK3 antibody, RIOK3\_HUMAN antibody, Serine/threonine protein kinase RIO3 antibody, Serine/threonine-protein kinase RIO3 antibody, Sudd (suppressor of bimD6, Aspergillus nidulans) homolog antibody, SUDD antibody, sudD homolog antibody, Sudd suppressor of Aspergillus nidulans bimD6 homolog antibody, Sudd suppressor of bimD6 homolog antibody

UniProt: [O14730](#)

## Application Details

Application Notes: WB:1:500-1:3000,

Restrictions: For Research Use only

## Handling

Format: Liquid

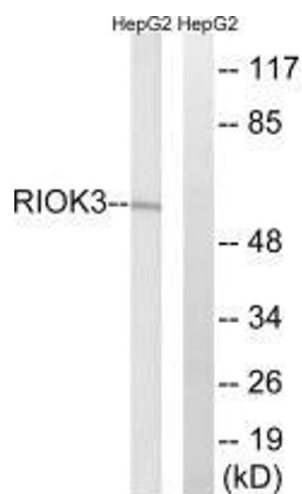
Buffer: Rabbit IgG in phosphate buffered saline (without Mg<sup>2+</sup> and Ca<sup>2+</sup>), pH 7.4, 150 mM NaCl, 0.02 % sodium azide and 50 % glycerol.

Preservative: Sodium azide

Precaution of Use: This product contains Sodium azide: a POISONOUS AND HAZARDOUS SUBSTANCE which should be handled by trained staff only.

Storage: -20 °C, -80 °C

Storage Comment: Upon receipt, store at -20°C or -80°C. Avoid repeated freeze.



Western Blotting

**Image 1.** Western blot analysis of extracts from HepG2 cells, using RIOK3 antibody.