

Datasheet for ABIN7184076

anti-POLR3B antibody[Go to Product page](#)**1** Image

Overview

Quantity:	100 µL
Target:	POLR3B
Reactivity:	Human
Host:	Rabbit
Clonality:	Polyclonal
Conjugate:	This POLR3B antibody is un-conjugated
Application:	Western Blotting (WB), ELISA

Product Details

Immunogen:	Synthesized peptide derived from internal of Human RPC2.
Isotype:	IgG
Cross-Reactivity:	Human, Mouse
Purification:	The antibody was affinity-purified from rabbit antiserum by affinity-chromatography using epitope-specific immunogen.

Target Details

Target:	POLR3B
Alternative Name:	POLR3B (POLR3B Products)
Background:	Background: DNA-dependent RNA polymerase catalyzes the transcription of DNA into RNA using the four ribonucleoside triphosphates as substrates. Second largest core component of RNA polymerase III which synthesizes small RNAs, such as 5S rRNA and tRNAs. Proposed to

Target Details

contribute to the polymerase catalytic activity and forms the polymerase active center together with the largest subunit. Pol III is composed of mobile elements and RPC2 is part of the core element with the central large cleft and probably a clamp element that moves to open and close the cleft By similarity. Plays a key role in sensing and limiting infection by intracellular bacteria and DNA viruses. Acts as nuclear and cytosolic DNA sensor involved in innate immune response. Can sense non-self dsDNA that serves as template for transcription into dsRNA. The non-self RNA polymerase III transcripts, such as Epstein-Barr virus-encoded RNAs (EBERs) induce type I interferon and NF- Kappa-B through the RIG-I pathway.

Hu P., Mol. Cell. Biol. 22:8044-8055(2002).

The MGC Project Team, Genome Res. 14:2121-2127(2004).

Ota T., Nat. Genet. 36:40-45(2004).

Aliases: C128 antibody, DNA directed RNA polymerase III 127.6 kDa polypeptide antibody, DNA directed RNA polymerase III subunit B antibody, DNA-directed RNA polymerase III 127.6 kDa polypeptide antibody, DNA-directed RNA polymerase III subunit B antibody, DNA-directed RNA polymerase III subunit RPC2 antibody, FLJ10388 antibody, polr3b antibody, Polymerase (RNA) III (DNA directed) polypeptide B antibody, RNA polymerase III subunit C2 antibody, RNA polymerase III subunit RPC2 antibody, RPC2 antibody, RPC2_HUMAN antibody

UniProt: [Q9NW08](#)

Application Details

Application Notes: WB:1:500-1:3000,

Restrictions: For Research Use only

Handling

Format: Liquid

Buffer: Rabbit IgG in phosphate buffered saline (without Mg²⁺ and Ca²⁺), pH 7.4, 150 mM NaCl, 0.02 % sodium azide and 50 % glycerol.

Preservative: Sodium azide

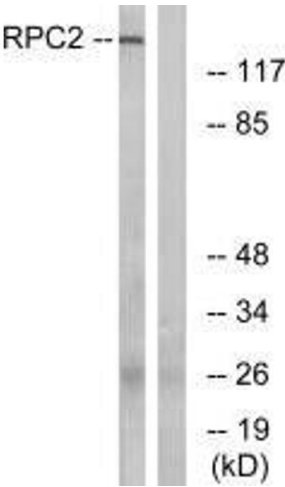
Precaution of Use: This product contains Sodium azide: a POISONOUS AND HAZARDOUS SUBSTANCE which should be handled by trained staff only.

Storage: -20 °C,-80 °C

Handling

Storage Comment: Upon receipt, store at -20°C or -80°C. Avoid repeated freeze.

Images



Western Blotting

Image 1. Western blot analysis of extracts from LOVO cells, using RPC2 antibody.