

Datasheet for ABIN7184087

anti-RPL31 antibody**1** Image[Go to Product page](#)

Overview

Quantity:	100 µL
Target:	RPL31
Reactivity:	Human
Host:	Rabbit
Clonality:	Polyclonal
Conjugate:	This RPL31 antibody is un-conjugated
Application:	ELISA, Immunohistochemistry (IHC)

Product Details

Immunogen:	Synthesized peptide derived from internal of Human RPL31.
Isotype:	IgG
Cross-Reactivity:	Human, Mouse
Purification:	The antibody was affinity-purified from rabbit antiserum by affinity-chromatography using epitope-specific immunogen.

Target Details

Target:	RPL31
Alternative Name:	RPL31 (RPL31 Products)
Background:	Background: Ribosomes, the organelles that catalyze protein synthesis, consist of a small 40S subunit and a large 60S subunit. Together these subunits are composed of 4 RNA species and approximately 80 structurally distinct proteins. This gene encodes a ribosomal protein that is a

Target Details

component of the 60S subunit. The protein belongs to the L31E family of ribosomal proteins. It is located in the cytoplasm. Higher levels of expression of this gene in familial adenomatous polyps compared to matched normal tissues have been observed. As is typical for genes encoding ribosomal proteins, there are multiple processed pseudogenes of this gene dispersed through the genome. Alternatively spliced transcript variants encoding distinct isoforms have been found for this gene.

Yoshihama M., Genome Res. 12:379-390(2002).

Hillier L.W., Nature 434:724-731(2005).

Rush J., Nat. Biotechnol. 23:94-101(2005).

Aliases: 60S ribosomal protein L31 antibody, L31 antibody, MGC88191 antibody, OTTHUMP00000202933 antibody, OTTHUMP00000202940 antibody, OTTHUMP00000202941 antibody, OTTHUMP00000202942 antibody, OTTHUMP00000202943 antibody, Ribosomal protein L31 antibody, RL31_HUMAN antibody, rpl31 antibody

UniProt: [P62899](#)

Application Details

Application Notes: IHC:1:50-1:100,

Restrictions: For Research Use only

Handling

Format: Liquid

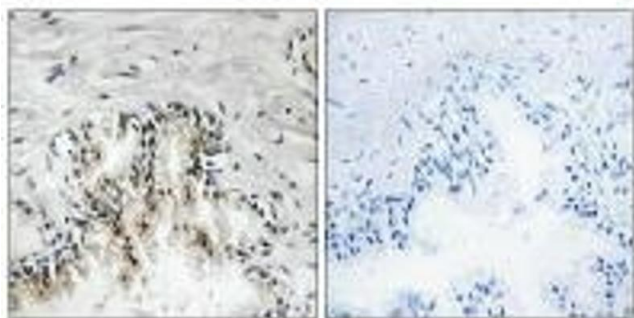
Buffer: Rabbit IgG in phosphate buffered saline (without Mg²⁺ and Ca²⁺), pH 7.4, 150 mM NaCl, 0.02 % sodium azide and 50 % glycerol.

Preservative: Sodium azide

Precaution of Use: This product contains Sodium azide: a POISONOUS AND HAZARDOUS SUBSTANCE which should be handled by trained staff only.

Storage: -20 °C,-80 °C

Storage Comment: Upon receipt, store at -20°C or -80°C. Avoid repeated freeze.



Immunohistochemistry

Image 1. Immunohistochemistry analysis of paraffin-embedded human prostate tissue using RPL31 antibody.