



[Go to Product page](#)

Datasheet for ABIN7184092

anti-RPL3L antibody

2 Images

Overview

Quantity:	100 µL
Target:	RPL3L
Reactivity:	Human
Host:	Rabbit
Clonality:	Polyclonal
Conjugate:	This RPL3L antibody is un-conjugated
Application:	ELISA, Immunohistochemistry (IHC), Immunofluorescence (IF)

Product Details

Immunogen:	Synthesized peptide derived from internal of Human RPL3L.
Isotype:	IgG
Cross-Reactivity:	Human
Purification:	The antibody was affinity-purified from rabbit antiserum by affinity-chromatography using epitope-specific immunogen.

Target Details

Target:	RPL3L
Alternative Name:	RPL3L (RPL3L Products)
Background:	Background: This gene encodes a protein that shares sequence similarity with ribosomal protein L3. The protein belongs to the L3P family of ribosomal proteins. Unlike the ubiquitous expression of ribosomal protein genes, this gene has a tissue-specific pattern of expression,

Target Details

with the highest levels of expression in skeletal muscle and heart. It is not currently known whether the encoded protein is a functional ribosomal protein or whether it has evolved a function that is independent of the ribosome.

van Raay T.J., Genomics 37:172-176(1996).

Daniels R.J., Hum. Mol. Genet. 10:339-352(2001).

The MGC Project Team, Genome Res. 14:2121-2127(2004).

Aliases: 60S ribosomal protein L3-like antibody, Ribosomal protein L3 like antibody, RL3L_HUMAN antibody, RPL3L antibody

UniProt: [Q92901](#)

Application Details

Application Notes: IHC:1:50-1:100, IF:1:100-1:500,

Restrictions: For Research Use only

Handling

Format: Liquid

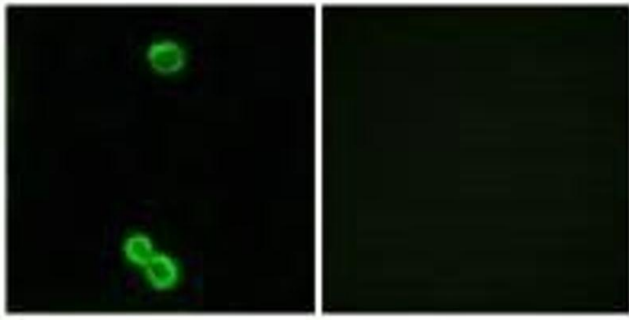
Buffer: Rabbit IgG in phosphate buffered saline (without Mg²⁺ and Ca²⁺), pH 7.4, 150 mM NaCl, 0.02 % sodium azide and 50 % glycerol.

Preservative: Sodium azide

Precaution of Use: This product contains Sodium azide: a POISONOUS AND HAZARDOUS SUBSTANCE which should be handled by trained staff only.

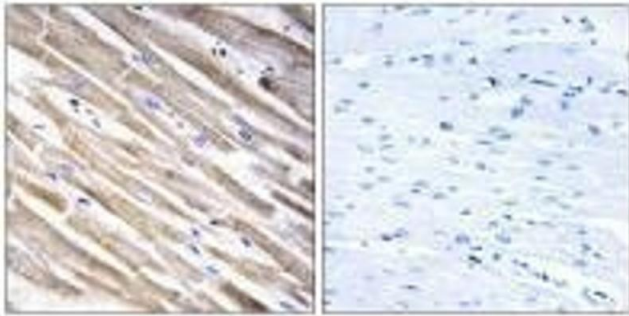
Storage: -20 °C,-80 °C

Storage Comment: Upon receipt, store at -20°C or -80°C. Avoid repeated freeze.



Immunofluorescence

Image 1. Immunofluorescence analysis of MCF-7 cells, using RPL3L antibody.



Immunohistochemistry

Image 2. Immunohistochemistry analysis of paraffin-embedded human heart tissue using RPL3L antibody.