

Datasheet for ABIN7184117

**anti-TAUT antibody****2** Images[Go to Product page](#)

## Overview

Quantity:	100 µL
Target:	TAUT
Reactivity:	Human
Host:	Rabbit
Clonality:	Polyclonal
Conjugate:	This TAUT antibody is un-conjugated
Application:	Western Blotting (WB), Immunohistochemistry (IHC), ELISA

## Product Details

Immunogen:	Synthesized peptide derived from internal of Human SC6A6.
Isotype:	IgG
Cross-Reactivity:	Human, Mouse
Purification:	The antibody was affinity-purified from rabbit antiserum by affinity-chromatography using epitope-specific immunogen.

## Target Details

Target:	TAUT
Alternative Name:	SLC6A6 ( <a href="#">TAUT Products</a> )
Background:	Background: Sodium-dependent taurine and beta-alanine transporter. Chloride ions are necessary for optimal uptake.

## Target Details

---

Jhiang S.M., FEBS Lett. 318:139-144(1993).

Ramamoorthy S., Biochem. J. 300:893-900(1994).

Miyamoto Y., Curr. Eye Res. 15:345-349(1996).

Aliases: MGC10619 antibody, MGC131729 antibody, OTTHUMP00000208177 antibody, OTTHUMP00000208180 antibody, SC6A6\_HUMAN antibody, SLC6A6 antibody, Sodium- and chloride-dependent taurine transporter antibody, Solute carrier family 6 (neurotransmitter transporter, taurine), member 6 antibody, Solute carrier family 6 member 6 antibody, TAUT antibody

---

UniProt: [P31641](#)

## Application Details

---

Application Notes: WB:1:500-1:3000, IHC:1:50-1:100,

Restrictions: For Research Use only

## Handling

---

Format: Liquid

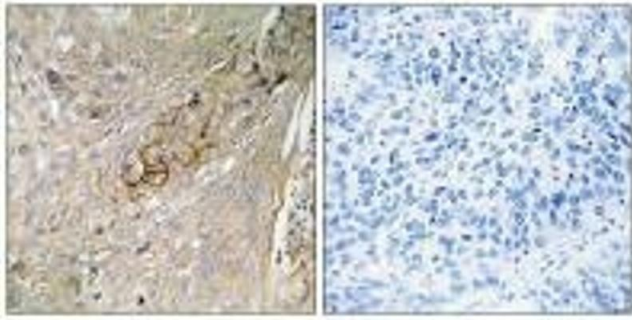
Buffer: Rabbit IgG in phosphate buffered saline (without Mg<sup>2+</sup> and Ca<sup>2+</sup>), pH 7.4, 150 mM NaCl, 0.02 % sodium azide and 50 % glycerol.

Preservative: Sodium azide

Precaution of Use: This product contains Sodium azide: a POISONOUS AND HAZARDOUS SUBSTANCE which should be handled by trained staff only.

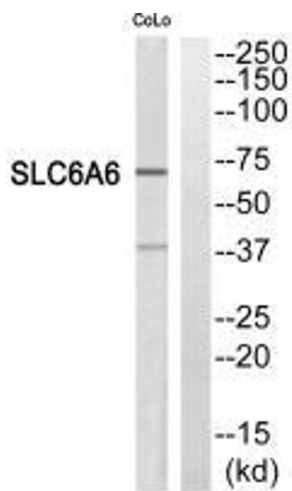
Storage: -20 °C,-80 °C

Storage Comment: Upon receipt, store at -20°C or -80°C. Avoid repeated freeze.



### Immunohistochemistry

**Image 1.** Immunohistochemistry analysis of paraffin-embedded human lung carcinoma tissue using SC6A6 antibody.



### Western Blotting

**Image 2.** Western blot analysis of extracts from COLO205 cells, using SC6A6 antibody.