



[Go to Product page](#)

Datasheet for ABIN7184122

anti-SCN7A antibody

1 Image

Overview

Quantity:	100 µL
Target:	SCN7A
Reactivity:	Human
Host:	Rabbit
Clonality:	Polyclonal
Conjugate:	This SCN7A antibody is un-conjugated
Application:	ELISA, Immunofluorescence (IF)

Product Details

Immunogen:	Synthesized peptide derived from internal of Human SCN7A.
Isotype:	IgG
Cross-Reactivity:	Human
Purification:	The antibody was affinity-purified from rabbit antiserum by affinity-chromatography using epitope-specific immunogen.

Target Details

Target:	SCN7A
Alternative Name:	SCN7A (SCN7A Products)
Background:	Background: Mediates the voltage-dependent sodium ion permeability of excitable membranes. Assuming opened or closed conformations in response to the voltage difference across the membrane, the protein forms a sodium-selective channel through which Na ⁺ ions may pass in

Target Details

accordance with their electrochemical gradient.

George A.L. Jr., Proc. Natl. Acad. Sci. U.S.A. 89:4893-4897(1992).

Aliases: SCN7A antibody, SCN6A antibody, Sodium channel protein type 7 subunit alpha antibody, Putative voltage-gated sodium channel subunit alpha Nax antibody, Sodium channel protein cardiac and skeletal muscle subunit alpha antibody, Sodium channel protein type VII subunit alpha antibody

UniProt: [Q01118](#)

Application Details

Application Notes: IF:1:100-1:500,

Restrictions: For Research Use only

Handling

Format: Liquid

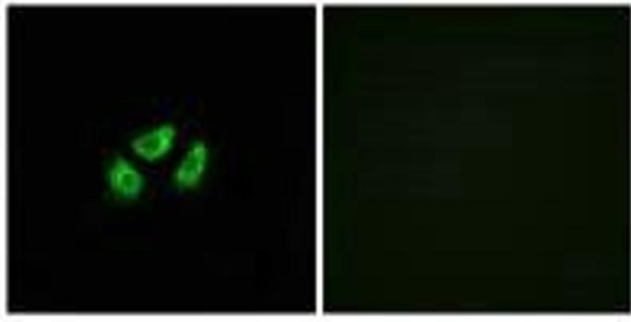
Buffer: Rabbit IgG in phosphate buffered saline (without Mg²⁺ and Ca²⁺), pH 7.4, 150 mM NaCl, 0.02 % sodium azide and 50 % glycerol.

Preservative: Sodium azide

Precaution of Use: This product contains Sodium azide: a POISONOUS AND HAZARDOUS SUBSTANCE which should be handled by trained staff only.

Storage: -20 °C,-80 °C

Storage Comment: Upon receipt, store at -20°C or -80°C. Avoid repeated freeze.



Immunofluorescence

Image 1. Immunofluorescence analysis of A549 cells, using SCN7A antibody.