



[Go to Product page](#)

Datasheet for ABIN7184125
anti-Syndecan 2 antibody

1 Image

Overview

Quantity:	100 µL
Target:	Syndecan 2 (SDC2)
Reactivity:	Human
Host:	Rabbit
Clonality:	Polyclonal
Conjugate:	This Syndecan 2 antibody is un-conjugated
Application:	Western Blotting (WB), ELISA

Product Details

Immunogen:	Synthesized peptide derived from internal of Human SDC2.
Isotype:	IgG
Cross-Reactivity:	Human
Purification:	The antibody was affinity-purified from rabbit antiserum by affinity-chromatography using epitope-specific immunogen.

Target Details

Target:	Syndecan 2 (SDC2)
Alternative Name:	SDC2 (SDC2 Products)
Background:	Background: Cell surface proteoglycan that bears heparan sulfate. Regulates dendritic arbor morphogenesis By similarity.

Target Details

Marynen P., J. Biol. Chem. 264:7017-7024(1989).

Ota T., Nat. Genet. 36:40-45(2004).

Otsuki T., DNA Res. 12:117-126(2005).

Aliases: CD362 antibody, Fibroglycan antibody, Heparan sulfate proteoglycan core protein antibody, HSPG antibody, SDC2 antibody, SDC2_HUMAN antibody, SYND2 antibody, Syndecan-2 antibody

UniProt: [P34741](#)

Pathways: [Glycosaminoglycan Metabolic Process](#)

Application Details

Application Notes: WB:1:500-1:3000,

Restrictions: For Research Use only

Handling

Format: Liquid

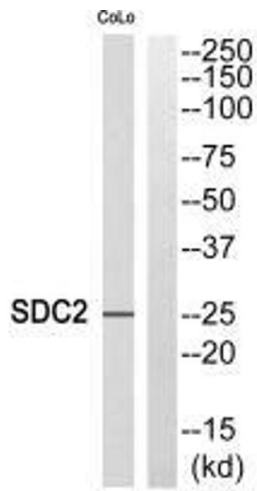
Buffer: Rabbit IgG in phosphate buffered saline (without Mg²⁺ and Ca²⁺), pH 7.4, 150 mM NaCl, 0.02 % sodium azide and 50 % glycerol.

Preservative: Sodium azide

Precaution of Use: This product contains Sodium azide: a POISONOUS AND HAZARDOUS SUBSTANCE which should be handled by trained staff only.

Storage: -20 °C,-80 °C

Storage Comment: Upon receipt, store at -20°C or -80°C. Avoid repeated freeze.



Western Blotting

Image 1. Western blot analysis of extracts from COLO cells, using SDC2 antibody.