



[Go to Product page](#)

Datasheet for ABIN7184127

anti-SENP3 antibody

2 Images

Overview

Quantity:	100 µL
Target:	SENP3
Reactivity:	Human
Host:	Rabbit
Clonality:	Polyclonal
Conjugate:	This SENP3 antibody is un-conjugated
Application:	Western Blotting (WB), ELISA, Immunohistochemistry (IHC)

Product Details

Immunogen:	Synthesized peptide derived from Internal of Human SENP3.
Isotype:	IgG
Cross-Reactivity:	Human, Mouse
Purification:	The antibody was affinity-purified from rabbit antiserum by affinity-chromatography using epitope-specific immunogen.

Target Details

Target:	SENP3
Alternative Name:	SENP3 (SENP3 Products)
Background:	Background: Protease that releases SUMO2 and SUMO3 monomers from sumoylated substrates, but has only weak activity against SUMO1 conjugates. Deconjugates SUMO2 from MEF2D, which increases its transcriptional activation capability. Deconjugates SUMO2 and

Target Details

SUMO3 from CDCA8. Redox sensor that, when redistributed into nucleoplasm, can act as an effector to enhance HIF1A transcriptional activity by desumoylating EP300. Required for rRNA processing through deconjugation of SUMO2 and SUMO3 from nucleophosmin, NPM1. Plays a role in the regulation of sumoylation status of ZNF148. Functions as a component of the Five Friends of Methylated CHTOP (5FMC) complex, the 5FMC complex is recruited to ZNF148 by methylated CHTOP, leading to desumoylation of ZNF148 and subsequent transactivation of ZNF148 target genes.

Yeh E.T.H., Gene 248:1-14(2000).

Choi S.J., Submitted (OCT-1999) to the EMBL/GenBank/DDBJ databases.

Wiemann S., Genome Res. 11:422-435(2001).

Aliases: SENP3 antibody, SENP3_HUMAN antibody, Sentrin / SUMO specific protease 3 antibody, Sentrin specific protease 3 antibody, Sentrin-specific protease 3 antibody, Sentrin/SUMO-specific protease SENP3 antibody, SMT3IP1 antibody, SSP3 antibody, SUMO 1 specific protease 3 antibody, SUMO-1-specific protease 3 antibody, SUMO1 specific protease 3 antibody, SUMO1/sentrin/SMT3 specific peptidase 3 antibody, SUSP3 antibody

UniProt: [Q9H4L4](#)

Application Details

Application Notes: WB:1:500-1:3000, IHC:1:50-1:100,

Restrictions: For Research Use only

Handling

Format: Liquid

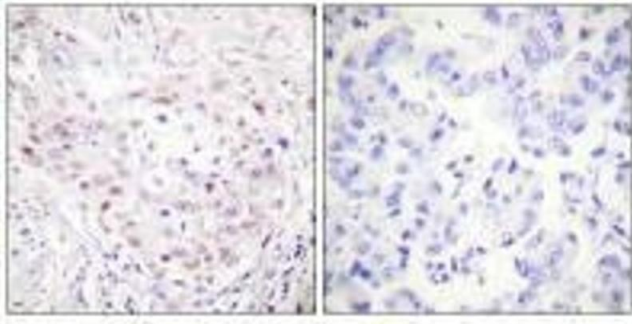
Buffer: Rabbit IgG in phosphate buffered saline (without Mg²⁺ and Ca²⁺), pH 7.4, 150 mM NaCl, 0.02 % sodium azide and 50 % glycerol.

Preservative: Sodium azide

Precaution of Use: This product contains Sodium azide: a POISONOUS AND HAZARDOUS SUBSTANCE which should be handled by trained staff only.

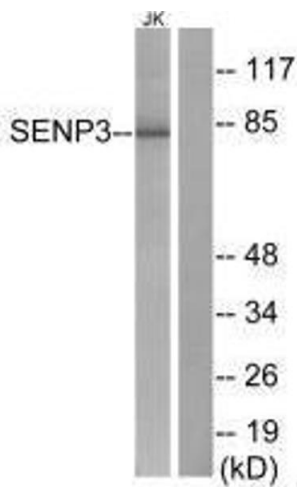
Storage: -20 °C,-80 °C

Storage Comment: Upon receipt, store at -20°C or -80°C. Avoid repeated freeze.



Immunohistochemistry

Image 1. Immunohistochemistry analysis of paraffin-embedded human breast carcinoma tissue, using SENP3 antibody.



Western Blotting

Image 2. Western blot analysis of extracts from Jurkat cells, using SENP3 antibody.