

Datasheet for ABIN7184151

anti-SH3TC1 antibody



[Go to Product page](#)

1 Image

Overview

Quantity:	100 µL
Target:	SH3TC1
Reactivity:	Human
Host:	Rabbit
Clonality:	Polyclonal
Conjugate:	This SH3TC1 antibody is un-conjugated
Application:	Western Blotting (WB), ELISA

Product Details

Immunogen:	Synthesized peptide derived from internal of Human SH3TC1.
Isotype:	IgG
Cross-Reactivity:	Human
Purification:	The antibody was affinity-purified from rabbit antiserum by affinity-chromatography using epitope-specific immunogen.

Target Details

Target:	SH3TC1
Alternative Name:	SH3TC1 (SH3TC1 Products)
Background:	Background:

Ota T., Nat. Genet. 36:40-45(2004).

Target Details

Hillier L.W., Nature 434:724-731(2005).

Mayya V., Sci. Signal. 2:RA46-RA46(2009).

Aliases: SH3TC1SH3 domain and tetratricopeptide repeat-containing protein 1 antibody

UniProt: [Q8TE82](#)

Application Details

Application Notes: WB:1:500-1:3000,

Restrictions: For Research Use only

Handling

Format: Liquid

Buffer: Rabbit IgG in phosphate buffered saline (without Mg²⁺ and Ca²⁺), pH 7.4, 150 mM NaCl, 0.02 % sodium azide and 50 % glycerol.

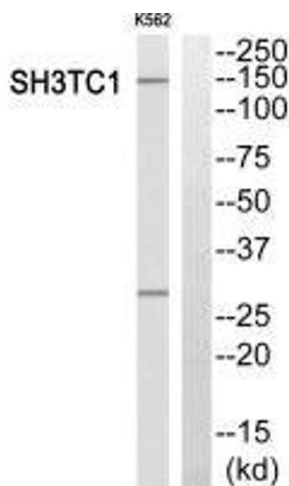
Preservative: Sodium azide

Precaution of Use: This product contains Sodium azide: a POISONOUS AND HAZARDOUS SUBSTANCE which should be handled by trained staff only.

Storage: -20 °C,-80 °C

Storage Comment: Upon receipt, store at -20°C or -80°C. Avoid repeated freeze.

Images



Western Blotting

Image 1. Western blot analysis of extracts from K562 cells, using SH3TC1 antibody.