



Datasheet for ABIN7184196  
**anti-SPTbN5 antibody**



[Go to Product page](#)

1 Image

### Overview

Quantity:	100 µL
Target:	SPTbN5
Reactivity:	Human
Host:	Rabbit
Clonality:	Polyclonal
Conjugate:	This SPTbN5 antibody is un-conjugated
Application:	ELISA, Immunohistochemistry (IHC)

### Product Details

Immunogen:	Synthesized peptide derived from internal of Human SPTBN5.
Isotype:	IgG
Cross-Reactivity:	Human
Purification:	The antibody was affinity-purified from rabbit antiserum by affinity-chromatography using epitope-specific immunogen.

### Target Details

Target:	SPTbN5
Alternative Name:	SPTBN5 ( <a href="#">SPTbN5 Products</a> )
Background:	Background: Belongs to the spectrin family.

Stabach P.R., J. Biol. Chem. 275:21385-21395(2000).

## Target Details

Aliases: Beta-V spectrin antibody, brain 4 antibody, BSPECV antibody, HUBSPECV antibody, HUSPECV antibody, non-erythroid beta chain 4 antibody, Spectrin antibody, Spectrin beta chain antibody, Spectrin beta chain, brain 4 antibody, Spectrin, non-erythroid beta chain 4 antibody, SPTBN4 antibody, SPTBN5 antibody, SPTN5\_HUMAN antibody

UniProt: [Q9NRC6](#)

## Application Details

Application Notes: IHC:1:50-1:100,

Restrictions: For Research Use only

## Handling

Format: Liquid

Buffer: Rabbit IgG in phosphate buffered saline (without Mg<sup>2+</sup> and Ca<sup>2+</sup>), pH 7.4, 150 mM NaCl, 0.02 % sodium azide and 50 % glycerol.

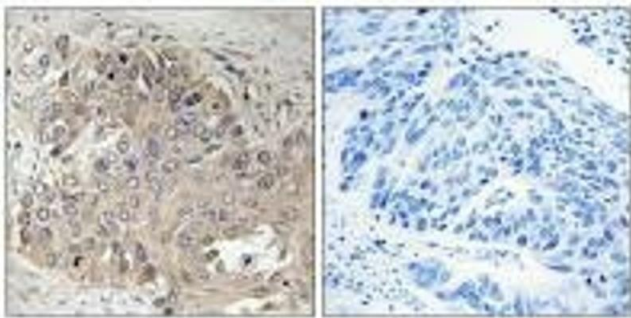
Preservative: Sodium azide

Precaution of Use: This product contains Sodium azide: a POISONOUS AND HAZARDOUS SUBSTANCE which should be handled by trained staff only.

Storage: -20 °C,-80 °C

Storage Comment: Upon receipt, store at -20°C or -80°C. Avoid repeated freeze.

## Images



### Immunohistochemistry

**Image 1.** Immunohistochemistry analysis of paraffin-embedded human lung carcinoma tissue using SPTBN5 antibody.