

Datasheet for ABIN7184207

**anti-STK36 antibody****2** Images[Go to Product page](#)

## Overview

Quantity:	100 µL
Target:	STK36
Reactivity:	Human
Host:	Rabbit
Clonality:	Polyclonal
Conjugate:	This STK36 antibody is un-conjugated
Application:	ELISA, Western Blotting (WB), Immunohistochemistry (IHC)

## Product Details

Immunogen:	Synthesized peptide derived from internal of Human STK36.
Isotype:	IgG
Cross-Reactivity:	Human
Purification:	The antibody was affinity-purified from rabbit antiserum by affinity-chromatography using epitope-specific immunogen.

## Target Details

Target:	STK36
Alternative Name:	STK36 ( <a href="#">STK36 Products</a> )
Background:	Background: Serine/threonine protein kinase which plays an important role in the sonic hedgehog (Shh) pathway by regulating the activity of GLI transcription factors. Controls the activity of the transcriptional regulators GLI1, GLI2 and GLI3 by opposing the effect of SUFU

## Target Details

and promoting their nuclear localization. GLI2 requires an additional function of STK36 to become transcriptionally active, but the enzyme does not need to possess an active kinase catalytic site for this to occur. Required for postnatal development, possibly by regulating the homeostasis of cerebral spinal fluid or ciliary function. Essential for construction of the central pair apparatus of motile cilia.

Murone M., Nat. Cell Biol. 2:310-312(2000).

Nagase T., DNA Res. 6:337-345(1999).

Hillier L.W., Nature 434:724-731(2005).

Aliases: FU antibody, Fused homolog antibody, KIAA1278 antibody, Serine/threonine kinase 36, fused homolog antibody, Serine/threonine protein kinase 36 fused homolog antibody, Serine/threonine-protein kinase 36 antibody, STK36 antibody, STK36\_HUMAN antibody

UniProt: [Q9NRP7](#)

## Application Details

Application Notes: WB:1:500-1:3000, IHC:1:50-1:100,

Restrictions: For Research Use only

## Handling

Format: Liquid

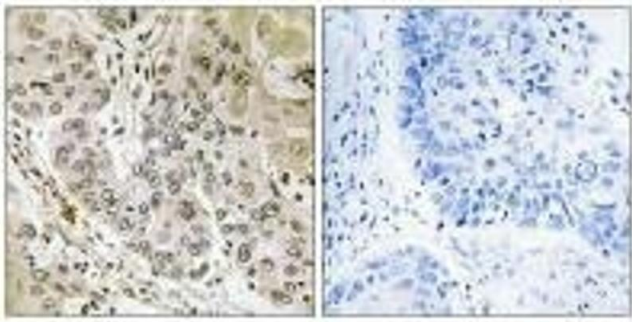
Buffer: Rabbit IgG in phosphate buffered saline (without Mg<sup>2+</sup> and Ca<sup>2+</sup>), pH 7.4, 150 mM NaCl, 0.02 % sodium azide and 50 % glycerol.

Preservative: Sodium azide

Precaution of Use: This product contains Sodium azide: a POISONOUS AND HAZARDOUS SUBSTANCE which should be handled by trained staff only.

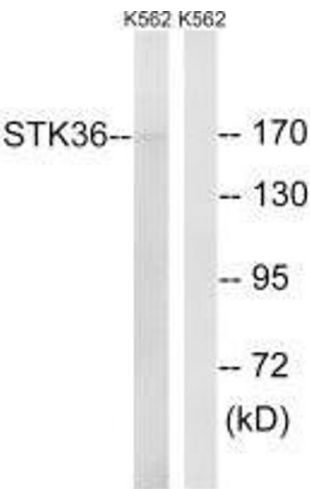
Storage: -20 °C, -80 °C

Storage Comment: Upon receipt, store at -20°C or -80°C. Avoid repeated freeze.



Immunohistochemistry

**Image 1.** Immunohistochemistry analysis of paraffin-embedded human lung carcinoma tissue, using STK36 antibody.



Western Blotting

**Image 2.** Western blot analysis of extracts from K562 cells, using STK36 antibody.