



[Go to Product page](#)

Datasheet for ABIN7184215

anti-SYT16 antibody

1 Image

Overview

Quantity:	100 µL
Target:	SYT16
Reactivity:	Human
Host:	Rabbit
Clonality:	Polyclonal
Conjugate:	This SYT16 antibody is un-conjugated
Application:	Western Blotting (WB), ELISA

Product Details

Immunogen:	Synthesized peptide derived from internal of Human SYT16.
Isotype:	IgG
Cross-Reactivity:	Human
Purification:	The antibody was affinity-purified from rabbit antiserum by affinity-chromatography using epitope-specific immunogen.

Target Details

Target:	SYT16
Alternative Name:	SYT16 (SYT16 Products)
Background:	Background: May be involved in the trafficking and exocytosis of secretory vesicles in non-neuronal tissues. Is Ca ²⁺ -independent.

Target Details

Fukuda M., J. Biochem. 133:641-649(2003).

Craxton M.A., BMC Genomics 5:43-43(2004).

Aliases: SYT16 antibody, STREP14 antibody, SYT14L antibody, SYT14R antibody, Synaptotagmin-16 antibody, Chr14Syt antibody, Synaptotagmin 14-like protein antibody, Synaptotagmin XIV-related protein antibody

UniProt: [Q17RD7](#)

Application Details

Application Notes: WB:1:500-1:3000,

Restrictions: For Research Use only

Handling

Format: Liquid

Buffer: Rabbit IgG in phosphate buffered saline (without Mg²⁺ and Ca²⁺), pH 7.4, 150 mM NaCl, 0.02 % sodium azide and 50 % glycerol.

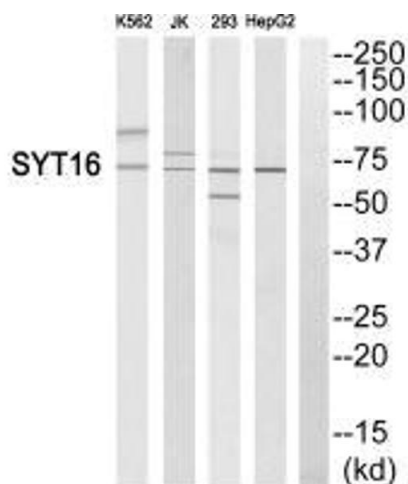
Preservative: Sodium azide

Precaution of Use: This product contains Sodium azide: a POISONOUS AND HAZARDOUS SUBSTANCE which should be handled by trained staff only.

Storage: -20 °C,-80 °C

Storage Comment: Upon receipt, store at -20°C or -80°C. Avoid repeated freeze.

Images



Western Blotting

Image 1. Western blot analysis of extracts from K562 cells, Jurkat cells, 293 cells and HepG2 cells, using SYT16 antibody.