



Datasheet for ABIN7184220
anti-TAF1 antibody



[Go to Product page](#)

1 Image

Overview

Quantity:	100 µL
Target:	TAF1
Reactivity:	Human
Host:	Rabbit
Clonality:	Polyclonal
Conjugate:	This TAF1 antibody is un-conjugated
Application:	ELISA, Immunohistochemistry (IHC)

Product Details

Immunogen:	Synthesized peptide derived from internal of Human TAF1.
Isotype:	IgG
Cross-Reactivity:	Human, Mouse
Purification:	The antibody was affinity-purified from rabbit antiserum by affinity-chromatography using epitope-specific immunogen.

Target Details

Target:	TAF1
Alternative Name:	TAF1 (TAF1 Products)
Background:	Background: Largest component and core scaffold of the TFIID basal transcription factor complex. Contains novel N- and C-terminal Ser/Thr kinase domains which can autophosphorylate or transphosphorylate other transcription factors. Phosphorylates TP53 on

Target Details

'Thr-55' which leads to MDM2-mediated degradation of TP53. Phosphorylates GTF2A1 and GTF2F1 on Ser residues. Possesses DNA-binding activity. Essential for progression of the G1 phase of the cell cycle. Exhibits histone acetyltransferase activity towards histones H3 and H4.

Sekiguchi T., Mol. Cell. Biol. 11:3317-3325(1991).

Ruppert S., Nature 362:175-179(1993).

Nolte D., Proc. Natl. Acad. Sci. U.S.A. 100:10347-10352(2003).

Aliases: BA2R antibody, CCG1 antibody, CCGS antibody, Cell cycle G1 phase defect antibody, Cell cycle gene 1 protein antibody, Complementation of cell cycle block G1 to S antibody, DYT3 antibody, N TAF1 antibody, NSCL2 antibody, OF antibody, p250 antibody, TAF 1 antibody, TAF(II)250 antibody, TAF1 antibody, TAF1 RNA polymerase II TATA box binding protein (TBP) associated factor 250 kDa antibody, TAF1_HUMAN antibody, TAF2A antibody, TAFII-250 antibody, TAFII250 antibody, TATA box binding protein (TBP) associated factor RNA polymerase II A 250kD antibody, TBP associated factor 250 kDa antibody, TBP-associated factor 250 kDa antibody, Transcription factor TFIID p250 polypeptide antibody, Transcription initiation factor TFIID 250 kDa subunit antibody, Transcription initiation factor TFIID subunit 1 antibody, XDP antibody

UniProt: [P21675](#)

Application Details

Application Notes: IHC:1:50-1:100,

Restrictions: For Research Use only

Handling

Format: Liquid

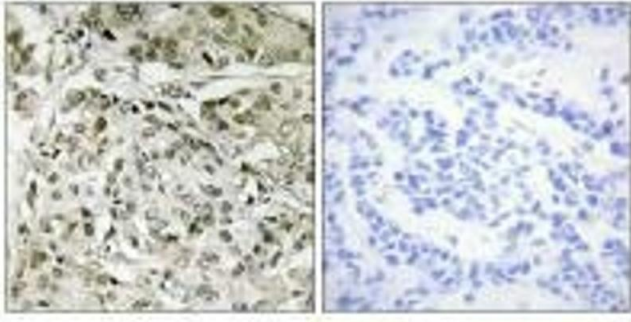
Buffer: Rabbit IgG in phosphate buffered saline (without Mg²⁺ and Ca²⁺), pH 7.4, 150 mM NaCl, 0.02 % sodium azide and 50 % glycerol.

Preservative: Sodium azide

Precaution of Use: This product contains Sodium azide: a POISONOUS AND HAZARDOUS SUBSTANCE which should be handled by trained staff only.

Storage: -20 °C,-80 °C

Storage Comment: Upon receipt, store at -20°C or -80°C. Avoid repeated freeze.



Immunohistochemistry

Image 1. Immunohistochemistry analysis of paraffin-embedded human breast carcinoma tissue, using TAF1 antibody.