

Datasheet for ABIN7184232

**anti-TBC1D3 antibody**[Go to Product page](#)**1** Image

## Overview

Quantity:	100 µL
Target:	TBC1D3
Reactivity:	Human
Host:	Rabbit
Clonality:	Polyclonal
Conjugate:	This TBC1D3 antibody is un-conjugated
Application:	ELISA, Western Blotting (WB)

## Product Details

Immunogen:	Synthesized peptide derived from internal of Human TBC1D3.
Isotype:	IgG
Cross-Reactivity:	Human
Purification:	The antibody was affinity-purified from rabbit antiserum by affinity-chromatography using epitope-specific immunogen.

## Target Details

Target:	TBC1D3
Alternative Name:	TBC1D3 ( <a href="#">TBC1D3 Products</a> )
Background:	Background: Acts as a GTPase activating protein for RAB5. Does not act on RAB4 or RAB11.  Pei L., Cancer Res. 62:5420-5424(2002).

## Target Details

Wiemann S., Genome Res. 11:422-435(2001).  
Onno M., DNA Cell Biol. 12:107-118(1993).  
Aliases: TBC1D3 antibody, PRC17 antibody, TBC1D3A antibody, TBC1 domain family member 3 antibody, Prostate cancer gene 17 protein antibody, Protein TRE17-alpha antibody, Rab GTPase-activating protein PRC17 antibody

UniProt: [Q8IZP1](#)

## Application Details

Application Notes: WB:1:500-1:3000,

Restrictions: For Research Use only

## Handling

Format: Liquid

Buffer: Rabbit IgG in phosphate buffered saline (without Mg<sup>2+</sup> and Ca<sup>2+</sup>), pH 7.4, 150 mM NaCl, 0.02 % sodium azide and 50 % glycerol.

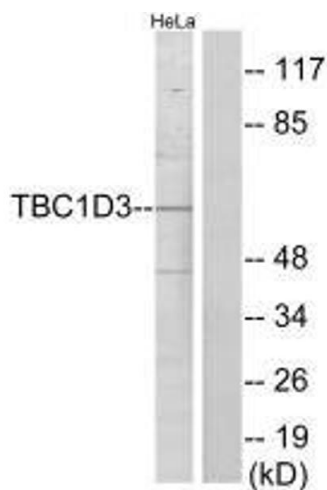
Preservative: Sodium azide

Precaution of Use: This product contains Sodium azide: a POISONOUS AND HAZARDOUS SUBSTANCE which should be handled by trained staff only.

Storage: -20 °C,-80 °C

Storage Comment: Upon receipt, store at -20°C or -80°C. Avoid repeated freeze.

## Images



### Western Blotting

**Image 1.** Western blot analysis of extracts from HeLa cells, using TBC1D3 antibody.