

Datasheet for ABIN7184265

**anti-TLE2 antibody****1** Image[Go to Product page](#)

## Overview

Quantity:	100 µL
Target:	TLE2
Reactivity:	Human
Host:	Rabbit
Clonality:	Polyclonal
Conjugate:	This TLE2 antibody is un-conjugated
Application:	Western Blotting (WB), ELISA

## Product Details

Immunogen:	Synthesized peptide derived from internal of Human TLE2.
Isotype:	IgG
Cross-Reactivity:	Human
Purification:	The antibody was affinity-purified from rabbit antiserum by affinity-chromatography using epitope-specific immunogen.

## Target Details

Target:	TLE2
Alternative Name:	TLE2 ( <a href="#">TLE2 Products</a> )
Background:	Background: Transcriptional corepressor that binds to a number of transcription factors. Inhibits the transcriptional activation mediated by CTNNB1 and TCF family members in Wnt signaling. The effects of full-length TLE family members may be modulated by association with

## Target Details

dominant-negative AES By similarity.

Stifani S., Nat. Genet. 2:119-127(1992).

Grimwood J., Nature 428:529-535(2004).

Grbavec D., Eur. J. Biochem. 258:339-349(1998).

Aliases: enhancer of split groucho 2 antibody, enhancer of split groucho 2 antibody, Enhancer of split groucho-like protein 2 antibody, ESG antibody, ESG2 antibody, FLJ41188 antibody, GRG2 antibody, Groucho2 antibody, KIAA4188 antibody, MGC124808 antibody, mKIAA4188 antibody, Tle2 antibody, Tle2 protein antibody, TLE2\_HUMAN antibody, transducin like enhancer of split 2 antibody, Transducin like enhancer of split 2, homolog of Drosophila E(sp1) antibody, Transducin like enhancer protein 2 antibody, Transducin-like enhancer of split 2 (E(sp1) homolog, Drosophila) antibody, Transducin-like enhancer of split 2, homolog of Drosophila E(spl) antibody, Transducin-like enhancer protein 2 antibody

UniProt: [Q04725](#)

Pathways: [WNT Signaling](#)

## Application Details

Application Notes: WB:1:500-1:3000,

Restrictions: For Research Use only

## Handling

Format: Liquid

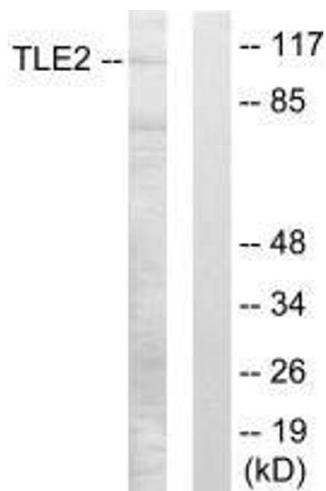
Buffer: Rabbit IgG in phosphate buffered saline (without Mg<sup>2+</sup> and Ca<sup>2+</sup>), pH 7.4, 150 mM NaCl, 0.02 % sodium azide and 50 % glycerol.

Preservative: Sodium azide

Precaution of Use: This product contains Sodium azide: a POISONOUS AND HAZARDOUS SUBSTANCE which should be handled by trained staff only.

Storage: -20 °C,-80 °C

Storage Comment: Upon receipt, store at -20°C or -80°C. Avoid repeated freeze.



Western Blotting

**Image 1.** Western blot analysis of extracts from LOVO cells, using TLE2 antibody.