

Datasheet for ABIN7184298  
**anti-TSEN54 antibody**



[Go to Product page](#)

2 Images

## Overview

Quantity:	100 µL
Target:	TSEN54
Reactivity:	Human
Host:	Rabbit
Clonality:	Polyclonal
Conjugate:	This TSEN54 antibody is un-conjugated
Application:	Western Blotting (WB), Immunohistochemistry (IHC), ELISA

## Product Details

Immunogen:	Synthesized peptide derived from internal of Human TSEN54.
Isotype:	IgG
Cross-Reactivity:	Human
Purification:	The antibody was affinity-purified from rabbit antiserum by affinity-chromatography using epitope-specific immunogen.

## Target Details

Target:	TSEN54
Alternative Name:	TSEN54 ( <a href="#">TSEN54 Products</a> )
Background:	Background: Non-catalytic subunit of the tRNA-splicing endonuclease complex, a complex responsible for identification and cleavage of the splice sites in pre-tRNA. It cleaves pre-tRNA at the 5' and 3' splice sites to release the intron. The products are an intron and two tRNA half-

## Target Details

---

molecules bearing 2',3' cyclic phosphate and 5'-OH termini. There are no conserved sequences at the splice sites, but the intron is invariably located at the same site in the gene, placing the splice sites an invariant distance from the constant structural features of the tRNA body. The tRNA splicing endonuclease is also involved in mRNA processing via its association with pre-mRNA 3'-end processing factors, establishing a link between pre-tRNA splicing and pre-mRNA 3'-end formation, suggesting that the endonuclease subunits function in multiple RNA-processing events.

Zody M.C., Nature 440:1045-1049(2006).

Paushkin S.V., Cell 117:311-321(2004).

Ota T., Nat. Genet. 36:40-45(2004).

Aliases: HsSen54 antibody, PCH2A antibody, PCH4 antibody, sen54 antibody, SEN54 homolog antibody, SEN54\_HUMAN antibody, SEN54L antibody, tRNA-intron endonuclease SEN54 antibody, tRNA-splicing endonuclease subunit SEN54 antibody, Tsen54 antibody, TSEN54 tRNA splicing endonuclease subunit antibody

---

UniProt: [Q7Z6J9](#)

---

Pathways: [Synaptic Membrane](#)

## Application Details

---

Application Notes: WB:1:500-1:3000, IHC:1:50-1:100,

---

Restrictions: For Research Use only

## Handling

---

Format: Liquid

---

Buffer: Rabbit IgG in phosphate buffered saline (without Mg<sup>2+</sup> and Ca<sup>2+</sup>), pH 7.4, 150 mM NaCl, 0.02 % sodium azide and 50 % glycerol.

---

Preservative: Sodium azide

---

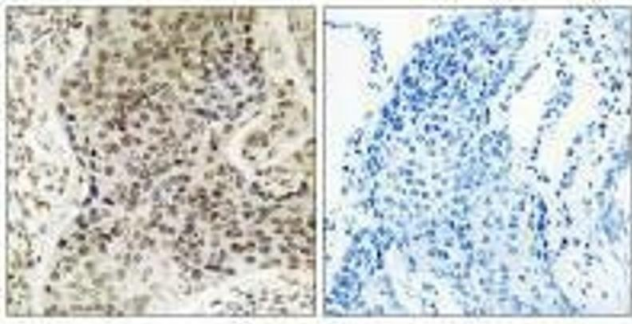
Precaution of Use: This product contains Sodium azide: a POISONOUS AND HAZARDOUS SUBSTANCE which should be handled by trained staff only.

---

Storage: -20 °C,-80 °C

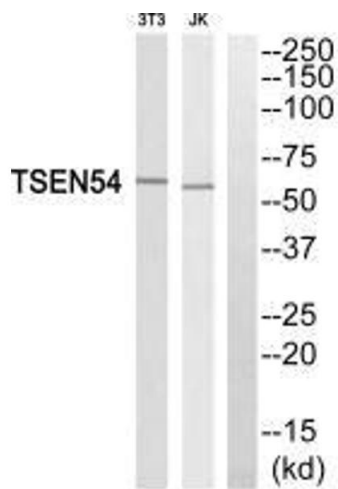
---

Storage Comment: Upon receipt, store at -20°C or -80°C. Avoid repeated freeze.



### Immunohistochemistry

**Image 1.** Immunohistochemistry analysis of paraffin-embedded human lung carcinoma tissue, using TSEN54 antibody.



### Western Blotting

**Image 2.** Western blot analysis of extracts from 3T3 cells and Jurkat cells, using TSEN54 antibody.