



[Go to Product page](#)

Datasheet for ABIN7184366

anti-ZNF23 antibody

1 Image

Overview

Quantity:	100 µL
Target:	ZNF23
Reactivity:	Human
Host:	Rabbit
Clonality:	Polyclonal
Conjugate:	This ZNF23 antibody is un-conjugated
Application:	ELISA, Western Blotting (WB)

Product Details

Immunogen:	Synthesized peptide derived from internal of Human ZNF23.
Isotype:	IgG
Cross-Reactivity:	Human
Purification:	The antibody was affinity-purified from rabbit antiserum by affinity-chromatography using epitope-specific immunogen.

Target Details

Target:	ZNF23
Alternative Name:	ZNF23 (ZNF23 Products)
Background:	Background: May be involved in transcriptional regulation. May have a role in embryonic development.

Target Details

Zhou L., Biochem. Biophys. Res. Commun. 295:862-868(2002).

The MGC Project Team, Genome Res. 14:2121-2127(2004).

Thiesen H.-J., New Biol. 2:363-374(1990).

Aliases: ZNF23 antibody, KOX16 antibody, ZNF359 antibody, ZNF612 Zinc finger protein 23 antibody, Zinc finger protein 359 antibody, Zinc finger protein 612 antibody, Zinc finger protein KOX16 antibody

UniProt: [P17027](#)

Application Details

Application Notes: WB:1:500-1:3000,

Restrictions: For Research Use only

Handling

Format: Liquid

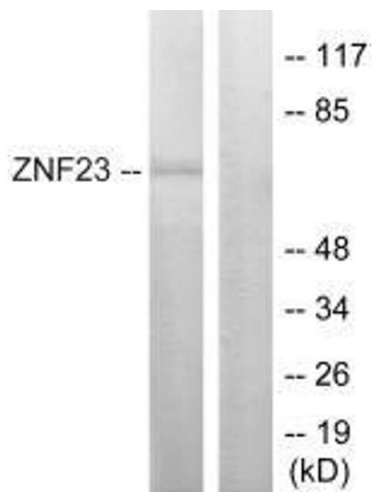
Buffer: Rabbit IgG in phosphate buffered saline (without Mg²⁺ and Ca²⁺), pH 7.4, 150 mM NaCl, 0.02 % sodium azide and 50 % glycerol.

Preservative: Sodium azide

Precaution of Use: This product contains Sodium azide: a POISONOUS AND HAZARDOUS SUBSTANCE which should be handled by trained staff only.

Storage: -20 °C, -80 °C

Storage Comment: Upon receipt, store at -20°C or -80°C. Avoid repeated freeze.



Western Blotting

Image 1. Western blot analysis of extracts from LOVO cells, using ZNF23 antibody.