



[Go to Product page](#)

Datasheet for ABIN7184373
anti-ZSCAN16 antibody

1 Image

Overview

Quantity:	100 µL
Target:	ZSCAN16
Reactivity:	Human
Host:	Rabbit
Clonality:	Polyclonal
Conjugate:	This ZSCAN16 antibody is un-conjugated
Application:	Western Blotting (WB), ELISA

Product Details

Immunogen:	Synthesized peptide derived from internal of Human ZNF435.
Isotype:	IgG
Cross-Reactivity:	Human
Purification:	The antibody was affinity-purified from rabbit antiserum by affinity-chromatography using epitope-specific immunogen.

Target Details

Target:	ZSCAN16
Alternative Name:	ZSCAN16 (ZSCAN16 Products)
Background:	Background: May be involved in transcriptional regulation.

Ota T., Nat. Genet. 36:40-45(2004).

Target Details

Mungall A.J., Nature 425:805-811(2003).

The MGC Project Team, Genome Res. 14:2121-2127(2004).

Aliases: ZSCAN16 antibody, ZNF392 antibody, ZNF435 antibody, Zinc finger and SCAN domain-containing protein 16 antibody, Zinc finger protein 392 antibody, Zinc finger protein 435 antibody

UniProt: [Q9H4T2](#)

Application Details

Application Notes: WB:1:500-1:3000,

Restrictions: For Research Use only

Handling

Format: Liquid

Buffer: Rabbit IgG in phosphate buffered saline (without Mg²⁺ and Ca²⁺), pH 7.4, 150 mM NaCl, 0.02 % sodium azide and 50 % glycerol.

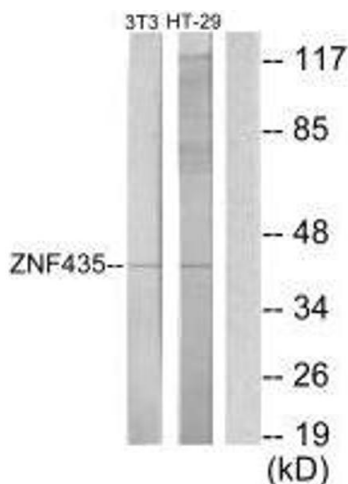
Preservative: Sodium azide

Precaution of Use: This product contains Sodium azide: a POISONOUS AND HAZARDOUS SUBSTANCE which should be handled by trained staff only.

Storage: -20 °C,-80 °C

Storage Comment: Upon receipt, store at -20°C or -80°C. Avoid repeated freeze.

Images



Western Blotting

Image 1. Western blot analysis of extracts from NIH-3T3 cells and HT-29 cells, using ZNF435 antibody.