

Datasheet for ABIN7184406
anti-AATF antibody (N-Term)[Go to Product page](#)

1 Image

Overview

Quantity:	100 µL
Target:	AATF
Binding Specificity:	N-Term
Reactivity:	Human
Host:	Rabbit
Clonality:	Polyclonal
Conjugate:	This AATF antibody is un-conjugated
Application:	Western Blotting (WB), ELISA

Product Details

Immunogen:	Synthesized peptide derived from N-terminal of Human AATF.
Isotype:	IgG
Cross-Reactivity:	Human, Mouse, Rat
Purification:	The antibody was affinity-purified from rabbit antiserum by affinity-chromatography using epitope-specific immunogen.

Target Details

Target:	AATF
Alternative Name:	AATF (AATF Products)
Background:	Background: May function as a general inhibitor of the histone deacetylase HDAC1. Binding to

Target Details

the pocket region of RB1 may displace HDAC1 from RB1/E2F complexes, leading to activation of E2F target genes and cell cycle progression. Conversely, displacement of HDAC1 from SP1 bound to the CDKN1A promoter leads to increased expression of this CDK inhibitor and blocks cell cycle progression. Also antagonizes PAWR mediated induction of aberrant amyloid peptide production in Alzheimer disease (presenile and senile dementia), although the molecular basis for this phenomenon has not been described to date.

Lindfors K., Biochem. Biophys. Res. Commun. 276:660-666(2000).

Fanciulli M., FASEB J. 14:904-912(2000).

Di Padova M., J. Biol. Chem. 278:36496-36504(2003).

Aliases: AATF antibody, AATF_HUMAN antibody, Apoptosis antagonizing transcription factor antibody, Apoptosis-antagonizing transcription factor antibody, BFR2 antibody, CHE 1 antibody, CHE1 antibody, DED antibody, Protein AATF antibody, Rb binding protein Che 1 antibody, Rb-binding protein Che-1 antibody

UniProt: [Q9NY61](#)

Pathways: [Neurotrophin Signaling Pathway](#), [SARS-CoV-2 Protein Interactome](#)

Application Details

Application Notes: WB:1:500-1:3000,

Restrictions: For Research Use only

Handling

Format: Liquid

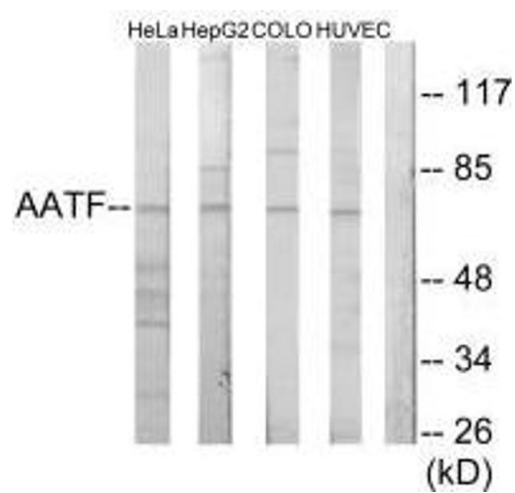
Buffer: Rabbit IgG in phosphate buffered saline (without Mg²⁺ and Ca²⁺), pH 7.4, 150 mM NaCl, 0.02 % sodium azide and 50 % glycerol.

Preservative: Sodium azide

Precaution of Use: This product contains Sodium azide: a POISONOUS AND HAZARDOUS SUBSTANCE which should be handled by trained staff only.

Storage: -20 °C, -80 °C

Storage Comment: Upon receipt, store at -20°C or -80°C. Avoid repeated freeze.



Western Blotting

Image 1. Western blot analysis of extracts from HeLa cells, HepG2 cells, COLO205 cells and HUVEC cells, using AATF antibody.