

Datasheet for ABIN7184410
anti-GRK2 antibody (N-Term)

2 Images



[Go to Product page](#)

Overview

Quantity:	100 µL
Target:	GRK2 (ADRBK1)
Binding Specificity:	N-Term
Reactivity:	Human
Host:	Rabbit
Clonality:	Polyclonal
Conjugate:	This GRK2 antibody is un-conjugated
Application:	Western Blotting (WB), ELISA

Product Details

Immunogen:	Synthesized peptide derived from N-terminal of Human ADRBK1.
Isotype:	IgG
Cross-Reactivity:	Human, Mouse, Rat
Purification:	The antibody was affinity-purified from rabbit antiserum by affinity-chromatography using epitope-specific immunogen.

Target Details

Target:	GRK2 (ADRBK1)
Alternative Name:	GRK2 (ADRBK1 Products)
Background:	Background: Specifically phosphorylates the agonist-occupied form of the beta-adrenergic and

Target Details

closely related receptors, probably inducing a desensitization of them. Key regulator of LPAR1 signaling. Competes with RALA for binding to LPAR1 thus affecting the signaling properties of the receptor. Desensitizes LPAR1 and LPAR2 in a phosphorylation-independent manner.

Benovic J.L., FEBS Lett. 283:122-126(1991).

Chuang T.T., J. Biol. Chem. 267:6886-6892(1992).

Penn R.B., J. Biol. Chem. 269:14924-14930(1994).

Aliases: ADRBK1 antibody, Adrenergic beta receptor kinase 1 antibody, ARBK1_HUMAN antibody, BARK antibody, BARK1 antibody, Beta adrenergic receptor kinase 1 antibody, Beta ARK 1 antibody, Beta ARK1 antibody, Beta-adrenergic receptor kinase 1 antibody, Beta-ARK-1 antibody, FLJ16718 antibody, G protein coupled receptor kinase 2 antibody, G-protein coupled receptor kinase 2 antibody, GRK2 antibody

UniProt: [P25098](#)

Pathways: [EGFR Signaling Pathway](#), [Neurotrophin Signaling Pathway](#), [Regulation of G-Protein Coupled Receptor Protein Signaling](#), [CXCR4-mediated Signaling Events](#), [G-protein mediated Events](#), [Interaction of EGFR with phospholipase C-gamma](#), [Thromboxane A2 Receptor Signaling](#)

Application Details

Application Notes: WB:1:500-1:3000,

Restrictions: For Research Use only

Handling

Format: Liquid

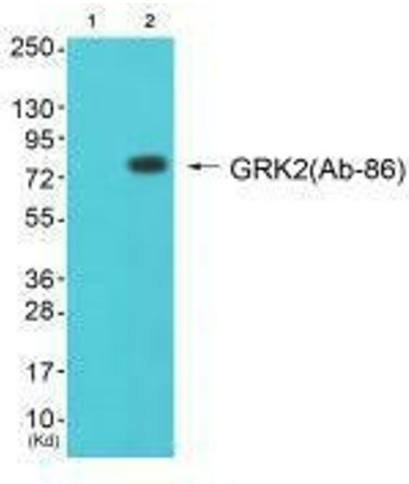
Buffer: Rabbit IgG in phosphate buffered saline (without Mg²⁺ and Ca²⁺), pH 7.4, 150 mM NaCl, 0.02 % sodium azide and 50 % glycerol.

Preservative: Sodium azide

Precaution of Use: This product contains Sodium azide: a POISONOUS AND HAZARDOUS SUBSTANCE which should be handled by trained staff only.

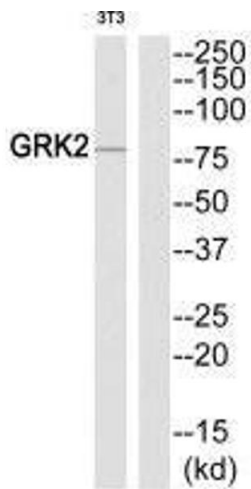
Storage: -20 °C,-80 °C

Storage Comment: Upon receipt, store at -20°C or -80°C. Avoid repeated freeze.



Western Blotting

Image 1. Western blot analysis of extracts from cos-7 cells (Lane 2), using GRK2 (Ab-86) antibody. The lane on the left is treated with synthesized peptide.



Western Blotting

Image 2. Western blot analysis of extracts from NIH-3T3 cells, using GRK2 (Ab-86) antibody.