

Datasheet for ABIN7184414  
**anti-ARHGEF11 antibody (N-Term)**[Go to Product page](#)

## 1 Image

## Overview

Quantity:	100 µL
Target:	ARHGEF11
Binding Specificity:	N-Term
Reactivity:	Human
Host:	Rabbit
Clonality:	Polyclonal
Conjugate:	This ARHGEF11 antibody is un-conjugated
Application:	Western Blotting (WB), ELISA

## Product Details

Immunogen:	Synthesized peptide derived from N-terminal of Human ARHGEF11.
Isotype:	IgG
Cross-Reactivity:	Human
Purification:	The antibody was affinity-purified from rabbit antiserum by affinity-chromatography using epitope-specific immunogen.

## Target Details

Target:	ARHGEF11
Alternative Name:	ARHGEF11 ( <a href="#">ARHGEF11 Products</a> )
Background:	Background: May play a role in the regulation of RhoA GTPase by guanine nucleotide-binding

## Target Details

alpha-12 (GNA12) and alpha-13 (GNA13). Acts as guanine nucleotide exchange factor (GEF) for RhoA GTPase and may act as GTPase-activating protein (GAP) for GNA12 and GNA13. Involved in neurotrophin-induced neurite outgrowth.

Nagase T., DNA Res. 4:141-150(1997).

Gregory S.G., Nature 441:315-321(2006).

Ruemenapp U., FEBS Lett. 459:313-318(1999).

Aliases: ARHGB\_HUMAN antibody, ARHGEF 11 antibody, ARHGEF11 antibody, DKFZp667F1223 antibody, Glutamate transporter EAAT4 associated protein 48 antibody, GTRAP 48 antibody, GTRAP48 antibody, KIAA0380 antibody, OTTHUMP00000038716 antibody, OTTHUMP00000038717 antibody, PDZ RHOGEF antibody, PDZ-RhoGEF antibody, Rho guanine exchange factor (GEF) 11 antibody, Rho guanine nucleotide exchange factor (GEF) 11 antibody, Rho guanine nucleotide exchange factor 11 antibody, RhoA specific guanine nucleotide exchange factor antibody, RhoGEF glutamate transport modulator antibody

UniProt: [O15085](#)

Pathways: [Neurotrophin Signaling Pathway](#), [Regulation of G-Protein Coupled Receptor Protein Signaling](#)

## Application Details

Application Notes: WB:1:500-1:3000,

Restrictions: For Research Use only

## Handling

Format: Liquid

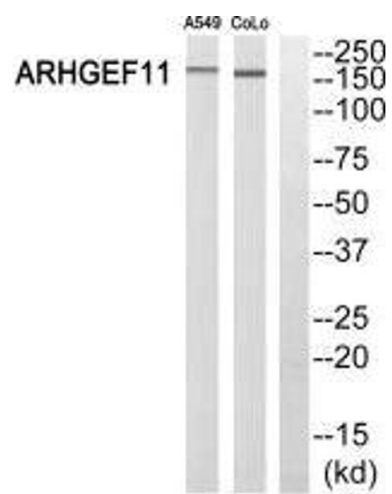
Buffer: Rabbit IgG in phosphate buffered saline (without Mg<sup>2+</sup> and Ca<sup>2+</sup>), pH 7.4, 150 mM NaCl, 0.02 % sodium azide and 50 % glycerol.

Preservative: Sodium azide

Precaution of Use: This product contains Sodium azide: a POISONOUS AND HAZARDOUS SUBSTANCE which should be handled by trained staff only.

Storage: -20 °C, -80 °C

Storage Comment: Upon receipt, store at -20°C or -80°C. Avoid repeated freeze.



Western Blotting

**Image 1.** Western blot analysis of extracts from A549 cells and COLO 205 cells, using ARHGEF11 antibody.