



[Go to Product page](#)

Datasheet for ABIN7184416  
**anti-Atrophin 1 antibody (N-Term)**

1 Image

Overview

Quantity:	100 µL
Target:	Atrophin 1 (ATN1)
Binding Specificity:	N-Term
Reactivity:	Human
Host:	Rabbit
Clonality:	Polyclonal
Conjugate:	This Atrophin 1 antibody is un-conjugated
Application:	Western Blotting (WB), ELISA

Product Details

Immunogen:	Synthesized peptide derived from N-terminal of Human ATN1.
Isotype:	IgG
Cross-Reactivity:	Human
Purification:	The antibody was affinity-purified from rabbit antiserum by affinity-chromatography using epitope-specific immunogen.

Target Details

Target:	Atrophin 1 (ATN1)
Alternative Name:	ATN1 ( <a href="#">ATN1 Products</a> )
Background:	Background: Transcriptional corepressor. Recruits NR2E1 to repress transcription. Promotes

## Target Details

---

vascular smooth cell (VSMC) migration and orientation By similarity. Corepressor of MTG8 transcriptional repression. Has some intrinsic repression activity which is independent of the number of poly-Asn (polyQ) repeats.

Nagafuchi S., Nat. Genet. 8:177-182(1994).

Onodera O., Am. J. Hum. Genet. 57:1050-1060(1995).

Margolis R.L., Brain Res. Mol. Brain Res. 36:219-226(1996).

Aliases: ATN1 antibody, D12S755E antibody, DRPLAAtrophin-1 antibody, Dentatorubral-pallidoluysian atrophy protein antibody

---

UniProt: [P54259](#)

## Application Details

---

Application Notes: WB:1:500-1:3000,

Restrictions: For Research Use only

## Handling

---

Format: Liquid

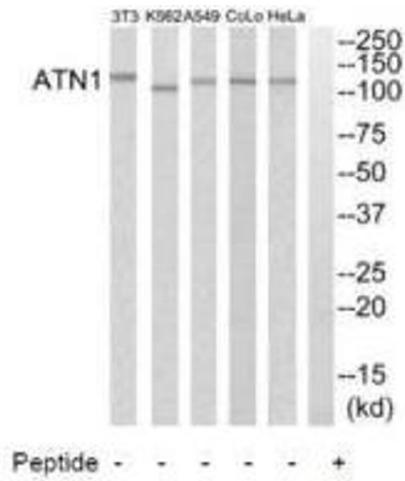
Buffer: Rabbit IgG in phosphate buffered saline (without Mg<sup>2+</sup> and Ca<sup>2+</sup>), pH 7.4, 150 mM NaCl, 0.02 % sodium azide and 50 % glycerol.

Preservative: Sodium azide

Precaution of Use: This product contains Sodium azide: a POISONOUS AND HAZARDOUS SUBSTANCE which should be handled by trained staff only.

Storage: -20 °C,-80 °C

Storage Comment: Upon receipt, store at -20°C or -80°C. Avoid repeated freeze.



### Western Blotting

**Image 1.** Western blot analysis of extracts from HeLa cells, A549 cells, K562 cells, COLO205 cells and NIH-3T3 cells, using ATN1 antibody.