



Datasheet for ABIN7184431
anti-CLCN7 antibody (N-Term)



[Go to Product page](#)

1 Image

Overview

Quantity:	100 µL
Target:	CLCN7
Binding Specificity:	N-Term
Reactivity:	Human
Host:	Rabbit
Clonality:	Polyclonal
Conjugate:	This CLCN7 antibody is un-conjugated
Application:	Western Blotting (WB), ELISA

Product Details

Immunogen:	Synthesized peptide derived from N-terminal of Human CLCN7.
Isotype:	IgG
Cross-Reactivity:	Human
Purification:	The antibody was affinity-purified from rabbit antiserum by affinity-chromatography using epitope-specific immunogen.

Target Details

Target:	CLCN7
Alternative Name:	CLCN7 (CLCN7 Products)
Background:	Background: Slowly voltage-gated channel mediating the exchange of chloride ions against

Target Details

protons. Functions as antiporter and contributes to the acidification of the lysosome lumen.

Rae J.L., Submitted (JAN-2000) to the EMBL/GenBank/DDBJ databases.

Ota T., Nat. Genet. 36:40-45(2004).

Martin J., Nature 432:988-994(2004).

Aliases: Chloride channel protein 7 antibody, CLC 7 antibody, ClC-7 antibody, ClC7 antibody, CLCN7 antibody, CLCN7_HUMAN antibody, FLJ26686 antibody, FLJ39644 antibody, FLJ46423 antibody, H(+)/Cl(-) exchange transporter 7 antibody, OPTA2 antibody, OPTB4 antibody

UniProt: [P51798](#)

Application Details

Application Notes: WB:1:500-1:3000,

Restrictions: For Research Use only

Handling

Format: Liquid

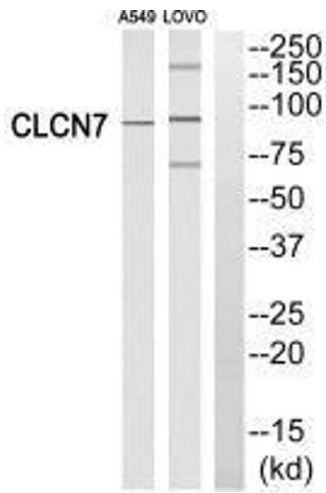
Buffer: Rabbit IgG in phosphate buffered saline (without Mg²⁺ and Ca²⁺), pH 7.4, 150 mM NaCl, 0.02 % sodium azide and 50 % glycerol.

Preservative: Sodium azide

Precaution of Use: This product contains Sodium azide: a POISONOUS AND HAZARDOUS SUBSTANCE which should be handled by trained staff only.

Storage: -20 °C,-80 °C

Storage Comment: Upon receipt, store at -20°C or -80°C. Avoid repeated freeze.



Western Blotting

Image 1. Western blot analysis of extracts from A549 cells and LOVO cells, using CLCN7 antibody.