



[Go to Product page](#)

Datasheet for ABIN7184435

anti-COX17 antibody (N-Term)

3 Images

Overview

| | |
|----------------------|----------------------------------------------------------|
| Quantity: | 100 µL |
| Target: | COX17 |
| Binding Specificity: | N-Term |
| Reactivity: | Human |
| Host: | Rabbit |
| Clonality: | Polyclonal |
| Conjugate: | This COX17 antibody is un-conjugated |
| Application: | ELISA, Immunohistochemistry (IHC), Western Blotting (WB) |

Product Details

| | |
|-------------------|-----------------------------------------------------------------------------------------------------------------------|
| Immunogen: | Synthesized peptide derived from N-terminal of Human COX17. |
| Isotype: | IgG |
| Cross-Reactivity: | Human, Mouse, Rat |
| Purification: | The antibody was affinity-purified from rabbit antiserum by affinity-chromatography using epitope-specific immunogen. |

Target Details

| | |
|-------------------|----------------------------------------------------------------------------------------|
| Target: | COX17 |
| Alternative Name: | COX17 (COX17 Products) |
| Background: | Background: Copper chaperone for cytochrome c oxidase (COX). Binds two copper ions and |

Target Details

deliver them to the Cu(A) site of COX By similarity.

Amaravadi R., Hum. Genet. 99:329-333(1997).

Punter F.A., Hum. Genet. 107:69-74(2000).

The MGC Project Team, Genome Res. 14:2121-2127(2004).

Aliases: COX 17 antibody, COX17 antibody, COX17 cytochrome c oxidase assembly homolog (S. cerevisiae) antibody, COX17 cytochrome c oxidase assembly homolog antibody, COX17 homolog cytochrome c oxidase assembly protein antibody, COX17_HUMAN antibody, cytochrome c oxidase assembly protein cox17 homolog antibody, Cytochrome c oxidase copper chaperone antibody, Human homolog of yeast mitochondrial copper recruitment antibody, MGC104397 antibody, MGC117386 antibody, OTTHUMP00000215284 antibody, OTTHUMP00000215285 antibody

UniProt: [Q14061](#)

Application Details

Application Notes: WB:1:500-1:3000, IHC:1:50-1:100,

Restrictions: For Research Use only

Handling

Format: Liquid

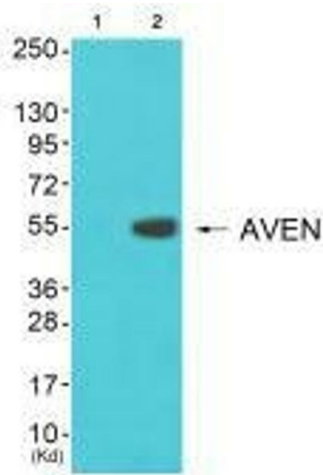
Buffer: Rabbit IgG in phosphate buffered saline (without Mg²⁺ and Ca²⁺), pH 7.4, 150 mM NaCl, 0.02 % sodium azide and 50 % glycerol.

Preservative: Sodium azide

Precaution of Use: This product contains Sodium azide: a POISONOUS AND HAZARDOUS SUBSTANCE which should be handled by trained staff only.

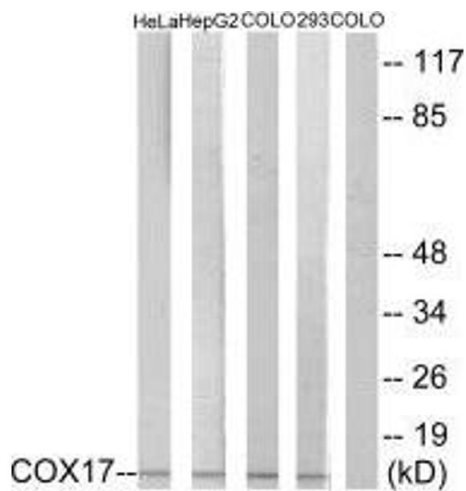
Storage: -20 °C,-80 °C

Storage Comment: Upon receipt, store at -20°C or -80°C. Avoid repeated freeze.



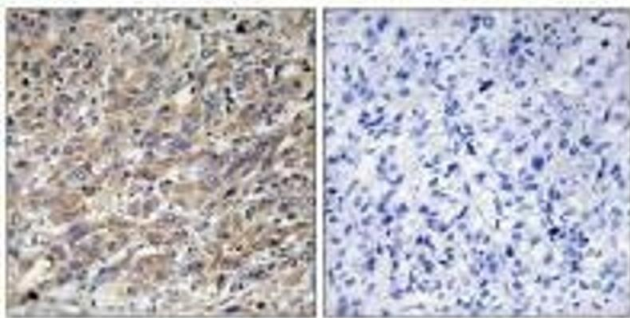
Western Blotting

Image 1. Western blot analysis of extracts from 3T3 cells (Lane 2), using COX17 antibody. The lane on the left is treated with synthesized peptide.



Western Blotting

Image 2. Western blot analysis of extracts from HeLa cells, HepG2 cells, COLO cells and 293 cells, using COX17 antibody.



Immunohistochemistry

Image 3. Immunohistochemistry analysis of paraffin-embedded human liver carcinoma tissue using COX17 antibody.