

Datasheet for ABIN7184441
anti-CUX1 antibody (N-Term)



[Go to Product page](#)

1 Image

Overview

Quantity:	100 µL
Target:	CUX1
Binding Specificity:	N-Term
Reactivity:	Human
Host:	Rabbit
Clonality:	Polyclonal
Conjugate:	This CUX1 antibody is un-conjugated
Application:	Western Blotting (WB), ELISA

Product Details

Immunogen:	Synthesized peptide derived from N-terminal of Human CUTL1.
Isotype:	IgG
Cross-Reactivity:	Human, Mouse
Purification:	The antibody was affinity-purified from rabbit antiserum by affinity-chromatography using epitope-specific immunogen.

Target Details

Target:	CUX1
Alternative Name:	CUX1 (CUX1 Products)
Background:	Background: Probably has a broad role in mammalian development as a repressor of

Target Details

developmentally regulated gene expression. May act by preventing binding of positively-activating CCAAT factors to promoters. Component of nf-munr repressor, binds to the matrix attachment regions (MARs) (5' and 3') of the immunoglobulin heavy chain enhancer. Represses T-cell receptor (TCR) beta enhancer function by binding to MARbeta, an ATC-rich DNA sequence located upstream of the TCR beta enhancer. Binds to the TH enhancer, may require the basic helix-loop-helix protein TCF4 as a coactivator By similarity.

Neufeld E.J., Nat. Genet. 1:50-55(1992).

Gloeckner G., Genome Res. 8:1060-1073(1998).

Rong Zeng W., Gene 241:75-85(2000).

Aliases: CUX1 antibody, CUTL1Homeobox protein cut-like 1 antibody, CCAAT displacement protein antibody, CDP antibody, Homeobox protein cux-1 antibody

UniProt: [P39880](#)

Pathways: [Cellular Glucan Metabolic Process](#)

Application Details

Application Notes: WB:1:500-1:3000,

Restrictions: For Research Use only

Handling

Format: Liquid

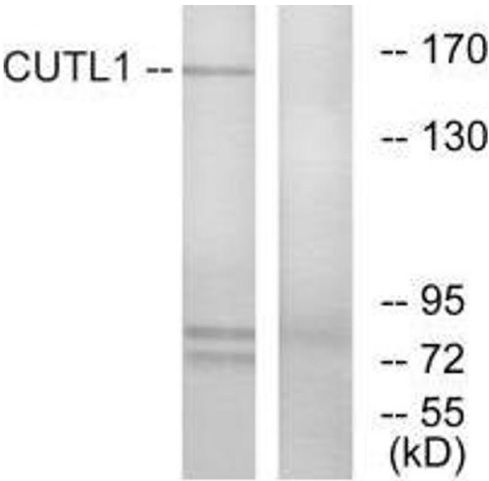
Buffer: Rabbit IgG in phosphate buffered saline (without Mg²⁺ and Ca²⁺), pH 7.4, 150 mM NaCl, 0.02 % sodium azide and 50 % glycerol.

Preservative: Sodium azide

Precaution of Use: This product contains Sodium azide: a POISONOUS AND HAZARDOUS SUBSTANCE which should be handled by trained staff only.

Storage: -20 °C,-80 °C

Storage Comment: Upon receipt, store at -20°C or -80°C. Avoid repeated freeze.



Western Blotting

Image 1. Western blot analysis of extracts from K562 cells, using CUTL1 antibody.