



[Go to Product page](#)

Datasheet for ABIN7184445
anti-POLA1 antibody (N-Term)

1 Image

Overview

Quantity:	100 µL
Target:	POLA1
Binding Specificity:	N-Term
Reactivity:	Human
Host:	Rabbit
Clonality:	Polyclonal
Conjugate:	This POLA1 antibody is un-conjugated
Application:	Western Blotting (WB), ELISA

Product Details

Immunogen:	Synthesized peptide derived from N-terminal of Human DNA Polymerase alpha.
Isotype:	IgG
Cross-Reactivity:	Human
Purification:	The antibody was affinity-purified from rabbit antiserum by affinity-chromatography using epitope-specific immunogen.

Target Details

Target:	POLA1
Alternative Name:	POLA1 (POLA1 Products)
Background:	Background: Plays an essential role in the initiation of DNA replication. During the S phase of

Target Details

the cell cycle, the DNA polymerase alpha complex (composed of a catalytic subunit POLA1/p180, a regulatory subunit POLA2/p70 and two primase subunits PRIM1/p49 and PRIM2/p58) is recruited to DNA at the replicative forks via direct interactions with MCM10 and WDHD1. The primase subunit of the polymerase alpha complex initiates DNA synthesis by oligomerising short RNA primers on both leading and lagging strands. These primers are initially extended by the polymerase alpha catalytic subunit and subsequently transferred to polymerase delta and polymerase epsilon for processive synthesis on the lagging and leading strand, respectively. The reason this transfer occurs is because the polymerase alpha has limited processivity and lacks intrinsic 3' exonuclease activity for proofreading error, and therefore is not well suited for replicating long complexes.

Wong S.W., EMBO J. 7:37-47(1988).

Pearson B.E., Mol. Cell. Biol. 11:2081-2095(1991).

Hsi K.-L., Nucleic Acids Res. 18:6231-6237(1990).

Aliases: DKFZp686K1672 antibody, DNA polymerase alpha 1 catalytic subunit antibody, DNA polymerase alpha catalytic subunit antibody, DNA polymerase alpha catalytic subunit p180 antibody, DNA polymerase alpha p180 subunit antibody, DPOLA_HUMAN antibody, OTTHUMP00000023089 antibody, OTTHUMP00000023090 antibody, P180 antibody, p180 subunit antibody, POLA antibody, POLA1 antibody, Polymerase (DNA directed), alpha 1, catalytic subunit antibody, Polymerase (DNA-directed), alpha (70kD) antibody

UniProt: [P09884](#)

Pathways: [SARS-CoV-2 Protein Interactome](#)

Application Details

Application Notes: WB:1:500-1:3000,

Restrictions: For Research Use only

Handling

Format: Liquid

Buffer: Rabbit IgG in phosphate buffered saline (without Mg²⁺ and Ca²⁺), pH 7.4, 150 mM NaCl, 0.02 % sodium azide and 50 % glycerol.

Preservative: Sodium azide

Precaution of Use: This product contains Sodium azide: a POISONOUS AND HAZARDOUS SUBSTANCE which

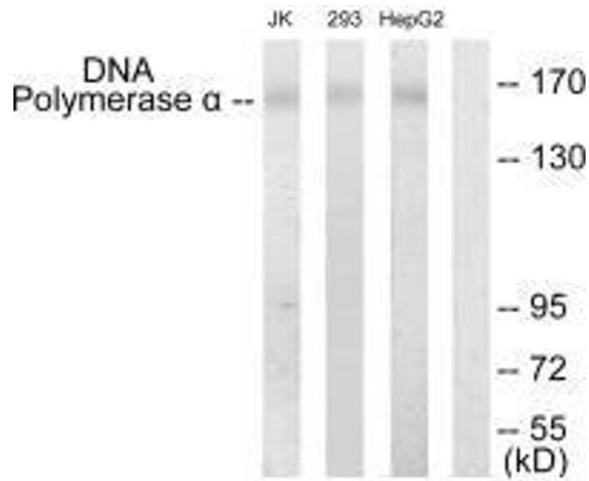
Handling

should be handled by trained staff only.

Storage: -20 °C,-80 °C

Storage Comment: Upon receipt, store at -20°C or -80°C. Avoid repeated freeze.

Images



Western Blotting

Image 1. Western blot analysis of extracts from Jurkat cells, 293 cells and HepG2 cells, using DNA Polymerase α antibody.