



Datasheet for ABIN7184451  
**anti-FKRP antibody (N-Term)**



[Go to Product page](#)

1 Image

Overview

Quantity:	100 µL
Target:	FKRP
Binding Specificity:	N-Term
Reactivity:	Human
Host:	Rabbit
Clonality:	Polyclonal
Conjugate:	This FKRP antibody is un-conjugated
Application:	Western Blotting (WB), ELISA

Product Details

Immunogen:	Synthesized peptide derived from N-terminal of Human FKRP.
Isotype:	IgG
Cross-Reactivity:	Human, Mouse, Rat
Purification:	The antibody was affinity-purified from rabbit antiserum by affinity-chromatography using epitope-specific immunogen.

Target Details

Target:	FKRP
Alternative Name:	FKRP ( <a href="#">FKRP Products</a> )
Background:	Background: Could be a transferase involved in the modification of glycan moieties of alpha-

## Target Details

---

dystroglycan (DAG1).

Brockington M., Am. J. Hum. Genet. 69:1198-1209(2001).

Ota T., Nat. Genet. 36:40-45(2004).

Brockington M., Hum. Mol. Genet. 10:2851-2859(2001).

Aliases: Fkrp antibody, FKRP\_HUMAN antibody, FLJ12576 antibody, Fukutin related protein antibody, Fukutin-related protein antibody, LGMD2I antibody, MDC1C antibody, MGC2991 antibody

---

UniProt: [Q9H9S5](#)

---

Pathways: [Regulation of Carbohydrate Metabolic Process](#)

## Application Details

---

Application Notes: WB:1:500-1:3000,

---

Restrictions: For Research Use only

## Handling

---

Format: Liquid

---

Buffer: Rabbit IgG in phosphate buffered saline (without Mg<sup>2+</sup> and Ca<sup>2+</sup>), pH 7.4, 150 mM NaCl, 0.02 % sodium azide and 50 % glycerol.

---

Preservative: Sodium azide

---

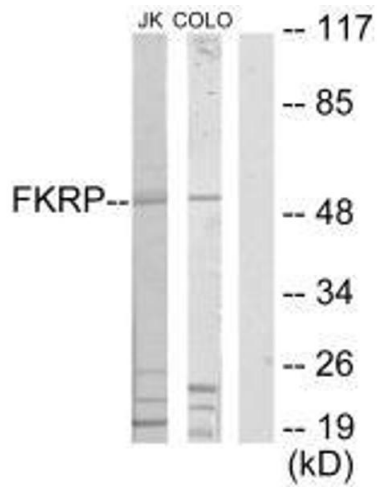
Precaution of Use: This product contains Sodium azide: a POISONOUS AND HAZARDOUS SUBSTANCE which should be handled by trained staff only.

---

Storage: -20 °C,-80 °C

---

Storage Comment: Upon receipt, store at -20°C or -80°C. Avoid repeated freeze.



### Western Blotting

**Image 1.** Western blot analysis of extracts from Jurkat cells and COLO205 cells, using FKRP antibody.