

Datasheet for ABIN7184455
anti-GRK6 antibody (N-Term)[Go to Product page](#)

2 Images

Overview

| | |
|----------------------|---|
| Quantity: | 100 µL |
| Target: | GRK6 |
| Binding Specificity: | N-Term |
| Reactivity: | Human |
| Host: | Rabbit |
| Clonality: | Polyclonal |
| Conjugate: | This GRK6 antibody is un-conjugated |
| Application: | Western Blotting (WB), ELISA, Immunofluorescence (IF) |

Product Details

| | |
|-------------------|---|
| Immunogen: | Synthesized peptide derived from N-terminal of Human GRK6. |
| Isotype: | IgG |
| Cross-Reactivity: | Human, Mouse, Rat |
| Purification: | The antibody was affinity-purified from rabbit antiserum by affinity-chromatography using epitope-specific immunogen. |

Target Details

| | |
|-------------------|---|
| Target: | GRK6 |
| Alternative Name: | GRK6 (GRK6 Products) |
| Background: | Background: Specifically phosphorylates the activated forms of G protein-coupled receptors. |

Target Details

Such receptor phosphorylation initiates beta-arrestin-mediated receptor desensitization, internalization, and signaling events leading to their desensitization. Seems to be involved in the desensitization of D2-like dopamine receptors in striatum and chemokine receptor CXCR4 which is critical for CXCL12-induced cell chemotaxis By similarity. Phosphorylates rhodopsin (RHO) (in vitro) and a non G-protein-coupled receptor: LRP6 during Wnt signaling (in vitro).

Benovic J.L., J. Biol. Chem. 268:19521-19527(1993).

Haribabu B., Proc. Natl. Acad. Sci. U.S.A. 90:9398-9402(1993).

Stoffel R.H., J. Biol. Chem. 269:27791-27794(1994).

Aliases: FLJ32135 antibody, G protein coupled receptor kinase 6 antibody, G protein coupled receptor kinase GRK6 antibody, G protein-coupled receptor kinase 6 antibody, G protein-coupled receptor kinase GRK6 antibody, Gprk6 antibody, Grk6 antibody, GRK6_HUMAN antibody

UniProt: [P43250](#)

Pathways: [Myometrial Relaxation and Contraction](#), [Regulation of G-Protein Coupled Receptor Protein Signaling](#), [CXCR4-mediated Signaling Events](#), [Negative Regulation of Transporter Activity](#)

Application Details

Application Notes: WB:1:500-1:3000, IF:1:100-1:500,

Restrictions: For Research Use only

Handling

Format: Liquid

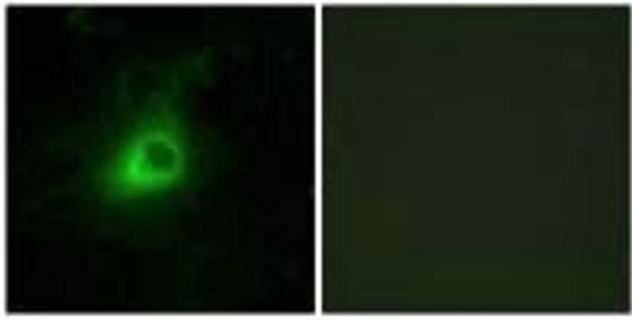
Buffer: Rabbit IgG in phosphate buffered saline (without Mg²⁺ and Ca²⁺), pH 7.4, 150 mM NaCl, 0.02 % sodium azide and 50 % glycerol.

Preservative: Sodium azide

Precaution of Use: This product contains Sodium azide: a POISONOUS AND HAZARDOUS SUBSTANCE which should be handled by trained staff only.

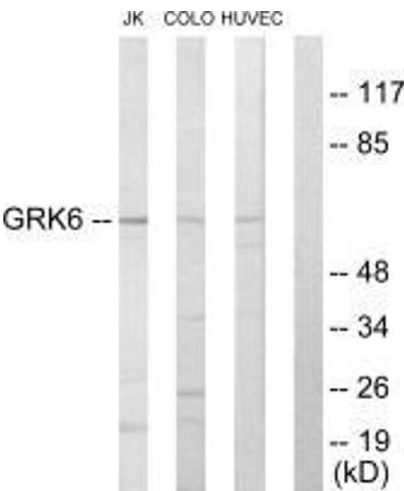
Storage: -20 °C,-80 °C

Storage Comment: Upon receipt, store at -20°C or -80°C. Avoid repeated freeze.



Immunofluorescence

Image 1. Immunofluorescence analysis of HeLa cells, using GRK6 antibody.



Western Blotting

Image 2. Western blot analysis of extracts from Jurkat cells, COLO205 cells and HUVEC cells, using GRK6 antibody.