

Datasheet for ABIN7184458
anti-HCFC1 antibody (N-Term)[Go to Product page](#)

1 Image

Overview

| | |
|----------------------|--------------------------------------|
| Quantity: | 100 µL |
| Target: | HCFC1 |
| Binding Specificity: | N-Term |
| Reactivity: | Human |
| Host: | Rabbit |
| Clonality: | Polyclonal |
| Conjugate: | This HCFC1 antibody is un-conjugated |
| Application: | Immunohistochemistry (IHC), ELISA |

Product Details

| | |
|-------------------|---|
| Immunogen: | Synthesized peptide derived from N-terminal of Human HCFC1. |
| Isotype: | IgG |
| Cross-Reactivity: | Human, Mouse |
| Purification: | The antibody was affinity-purified from rabbit antiserum by affinity-chromatography using epitope-specific immunogen. |

Target Details

| | |
|-------------------|---|
| Target: | HCFC1 |
| Alternative Name: | HCFC1 (HCFC1 Products) |
| Background: | Background: Involved in control of the cell cycle. Also antagonizes transactivation by ZBTB17 |

Target Details

and GABP2, represses ZBTB17 activation of the p15(INK4b) promoter and inhibits its ability to recruit p300. Coactivator for EGR2 and GABP2. Tethers the chromatin modifying Set1/Ash2 histone H3 'Lys-4' methyltransferase (H3K4me) and Sin3 histone deacetylase (HDAC) complexes (involved in the activation and repression of transcription, respectively) together. Component of a THAP1/THAP3-HCFC1-OGT complex that is required for the regulation of the transcriptional activity of RRM1. As part of the NSL complex it may be involved in acetylation of nucleosomal histone H4 on several lysine residues. In case of human herpes simplex virus (HSV) infection, HCFC1 forms a multiprotein-DNA complex with the viral transactivator protein VP16 and POU2F1 thereby enabling the transcription of the viral immediate early genes.

Wilson A.C., Cell 74:115-125(1993).

Kristie T.M., J. Biol. Chem. 270:4387-4394(1995).

Ross M.T., Nature 434:325-337(2005).

Aliases: C1 factor antibody, CFF antibody, HCF 1 antibody, HCF antibody, HCF C-terminal chain 6 antibody, HCF-1 antibody, HCF1 antibody, Hcfc1 antibody, HCFC1_HUMAN antibody, HFC1 antibody, Host cell factor 1 antibody, Host cell factor antibody, Host cell factor C1 (VP16 accessory protein) antibody, Host cell factor C1 antibody, MGC70925 antibody, MRX3 antibody, VCAF antibody, VP16 accessory protein antibody

UniProt: [P51610](#)

Application Details

Application Notes: IHC:1:50-1:100,

Restrictions: For Research Use only

Handling

Format: Liquid

Buffer: Rabbit IgG in phosphate buffered saline (without Mg²⁺ and Ca²⁺), pH 7.4, 150 mM NaCl, 0.02 % sodium azide and 50 % glycerol.

Preservative: Sodium azide

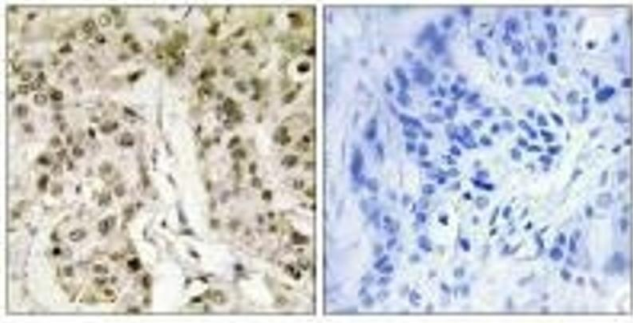
Precaution of Use: This product contains Sodium azide: a POISONOUS AND HAZARDOUS SUBSTANCE which should be handled by trained staff only.

Storage: -20 °C,-80 °C

Handling

Storage Comment: Upon receipt, store at -20°C or -80°C. Avoid repeated freeze.

Images



Immunohistochemistry

Image 1. Immunohistochemistry analysis of paraffin-embedded human breast carcinoma tissue, using HCFC1 antibody.