



[Go to Product page](#)

Datasheet for ABIN7184481
anti-C1orf35 antibody (N-Term)

1 Image

Overview

Quantity:	100 µL
Target:	C1orf35
Binding Specificity:	N-Term
Reactivity:	Human
Host:	Rabbit
Clonality:	Polyclonal
Conjugate:	This C1orf35 antibody is un-conjugated
Application:	Western Blotting (WB), ELISA

Product Details

Immunogen:	Synthesized peptide derived from N-terminal of Human MMTA2.
Isotype:	IgG
Cross-Reactivity:	Human, Mouse, Rat
Purification:	The antibody was affinity-purified from rabbit antiserum by affinity-chromatography using epitope-specific immunogen.

Target Details

Target:	C1orf35
Alternative Name:	MMTAG2 (C1orf35 Products)
Background:	Background: 4 isoforms of the human protein are produced by alternative splicing.

Target Details

Tian J.Y., Sheng Wu Hua Xue Yu Sheng Wu Wu Li Xue Bao 35:143-148(2003).

Ota T., Nat. Genet. 36:40-45(2004).

Gregory S.G., Nature 441:315-321(2006).

Aliases: MMTAG2 antibody, C1orf35Multiple myeloma tumor-associated protein 2 antibody, hMMTAG2 antibody

UniProt: [Q9BU76](#)

Application Details

Application Notes: WB:1:500-1:3000,

Restrictions: For Research Use only

Handling

Format: Liquid

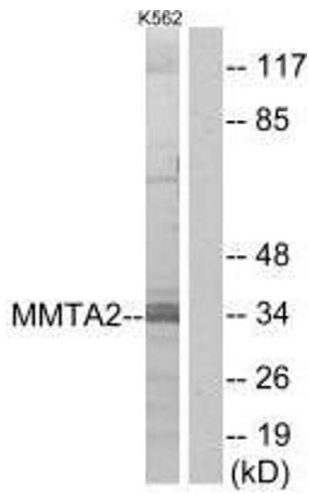
Buffer: Rabbit IgG in phosphate buffered saline (without Mg²⁺ and Ca²⁺), pH 7.4, 150 mM NaCl, 0.02 % sodium azide and 50 % glycerol.

Preservative: Sodium azide

Precaution of Use: This product contains Sodium azide: a POISONOUS AND HAZARDOUS SUBSTANCE which should be handled by trained staff only.

Storage: -20 °C,-80 °C

Storage Comment: Upon receipt, store at -20°C or -80°C. Avoid repeated freeze.



Western Blotting

Image 1. Western blot analysis of extracts from K562 cells, using MMTA2 antibody.