



[Go to Product page](#)

Datasheet for ABIN7184485
anti-NKX2-8 antibody (N-Term)

1 Image

Overview

Quantity:	100 µL
Target:	NKX2-8
Binding Specificity:	N-Term
Reactivity:	Human
Host:	Rabbit
Clonality:	Polyclonal
Conjugate:	This NKX2-8 antibody is un-conjugated
Application:	ELISA, Western Blotting (WB)

Product Details

Immunogen:	Synthesized peptide derived from N-terminal of Human NKX28.
Isotype:	IgG
Cross-Reactivity:	Human
Purification:	The antibody was affinity-purified from rabbit antiserum by affinity-chromatography using epitope-specific immunogen.

Target Details

Target:	NKX2-8
Alternative Name:	NKX28 (NKX2-8 Products)
Background:	Background:

Target Details

Apergis G.A., J. Biol. Chem. 273:2917-2925(1998).

Ota T., Nat. Genet. 36:40-45(2004).

The MGC Project Team, Genome Res. 14:2121-2127(2004).

Aliases: NK2 homeobox 8, NKX2-8,

UniProt: [Q8IUT7](#)

Application Details

Application Notes: WB:1:500-1:3000,

Restrictions: For Research Use only

Handling

Format: Liquid

Buffer: Rabbit IgG in phosphate buffered saline (without Mg²⁺ and Ca²⁺), pH 7.4, 150 mM NaCl, 0.02 % sodium azide and 50 % glycerol.

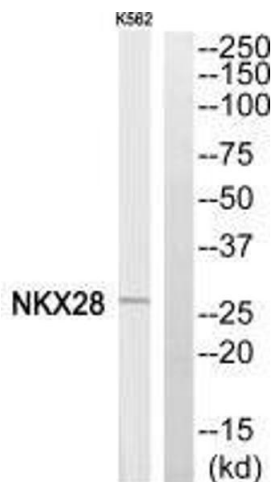
Preservative: Sodium azide

Precaution of Use: This product contains Sodium azide: a POISONOUS AND HAZARDOUS SUBSTANCE which should be handled by trained staff only.

Storage: -20 °C,-80 °C

Storage Comment: Upon receipt, store at -20°C or -80°C. Avoid repeated freeze.

Images



Western Blotting

Image 1. Western blot analysis of extracts from K562 cells, using NKX28 antibody.