

Datasheet for ABIN7184487  
**anti-NR2F6 antibody (N-Term)**

## 3 Images

[Go to Product page](#)

## Overview

Quantity:	100 µL
Target:	NR2F6
Binding Specificity:	N-Term
Reactivity:	Human
Host:	Rabbit
Clonality:	Polyclonal
Conjugate:	This NR2F6 antibody is un-conjugated
Application:	Western Blotting (WB), ELISA, Immunohistochemistry (IHC), Immunofluorescence (IF)

## Product Details

Immunogen:	Synthesized peptide derived from N-terminal of Human NR2F6.
Isotype:	IgG
Cross-Reactivity:	Human, Mouse, Rat
Purification:	The antibody was affinity-purified from rabbit antiserum by affinity-chromatography using epitope-specific immunogen.

## Target Details

Target:	NR2F6
Alternative Name:	NR2F6 ( <a href="#">NR2F6 Products</a> )
Background:	Background: Transcription factor predominantly involved in transcriptional repression. Binds to

## Target Details

promoter/enhancer response elements that contain the imperfect 5'-AGGTCA-3' direct or inverted repeats with various spacings which are also recognized by other nuclear hormone receptors. Involved in modulation of hormonal responses. Represses transcriptional activity of the lutropin-choriogonadotropic hormone receptor/LHCGR gene, the renin/REN gene and the oxytocin-neurophysin/OXT gene. Represses the triiodothyronine-dependent and -independent transcriptional activity of the thyroid hormone receptor gene in a cell type-specific manner. The corepressing function towards thyroid hormone receptor beta/THRB involves at least in part the inhibition of THRB binding to triiodothyronine response elements (TREs) by NR2F6. Inhibits NFATC transcription factor DNA binding and subsequently its transcriptional activity. Acts as transcriptional repressor of IL-17 expression in Th-17 differentiated CD4+ T cells and may be involved in induction and/or maintenance of peripheral immunological tolerance and autoimmunity. Involved in development of forebrain circadian clock, is required early in the development of the locus coeruleus (LC).

Miyajima N., Nucleic Acids Res. 16:11057-11074(1988).

The MGC Project Team, Genome Res. 14:2121-2127(2004).

Beausoleil S.A., Proc. Natl. Acad. Sci. U.S.A. 101:12130-12135(2004).

Aliases: EAR 2 antibody, EAR-2 antibody, EAR2 antibody, ERBA RELATED 2 antibody, ERBA related gene 2 antibody, ERBAL2 antibody, Nr2f6 antibody, NR2F6\_HUMAN antibody, Nuclear receptor subfamily 2 group F member 6 antibody, Orphan nuclear receptor EAR2 (V erbA related protein EAR 2) antibody, v erb a avian erythroblastic leukemia viral oncogene homolog like antibody, V erbA related protein EAR 2 antibody, V-erbA-related protein 2 antibody

UniProt: [P10588](#)

Pathways: [Nuclear Receptor Transcription Pathway](#), [Steroid Hormone Mediated Signaling Pathway](#), [Photoperiodism](#)

## Application Details

Application Notes: WB:1:500-1:3000, IHC:1:50-1:100, IF:1:100-1:500,

Restrictions: For Research Use only

## Handling

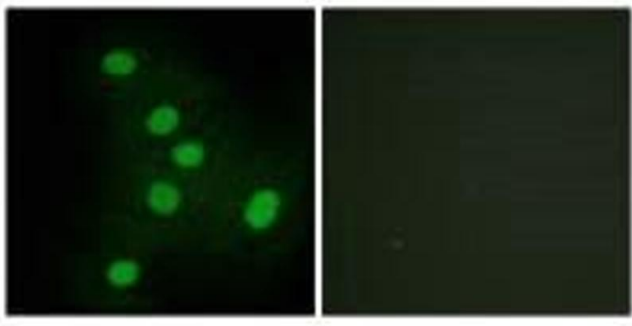
Format: Liquid

Buffer: Rabbit IgG in phosphate buffered saline (without Mg<sup>2+</sup> and Ca<sup>2+</sup>), pH 7.4, 150 mM NaCl,

## Handling

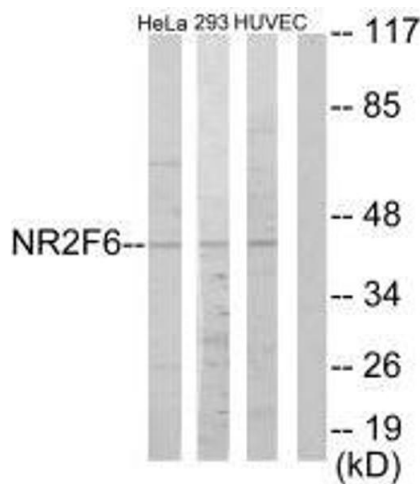
	0.02 % sodium azide and 50 % glycerol.
Preservative:	Sodium azide
Precaution of Use:	This product contains Sodium azide: a POISONOUS AND HAZARDOUS SUBSTANCE which should be handled by trained staff only.
Storage:	-20 °C,-80 °C
Storage Comment:	Upon receipt, store at -20°C or -80°C. Avoid repeated freeze.

## Images



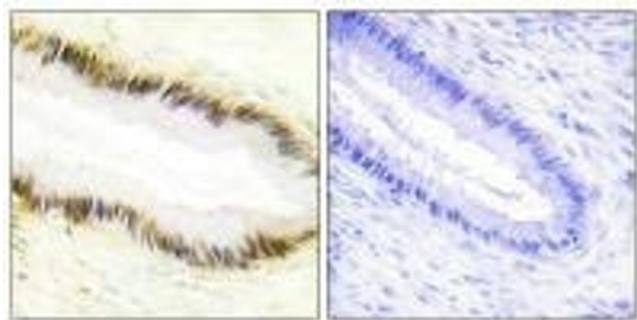
### Immunofluorescence

**Image 1.** Immunofluorescence analysis of HepG2 cells, using NR2F6 antibody.



### Western Blotting

**Image 2.** Western blot analysis of extracts from HeLa cells, 293 cells and HUVEC cells, using NR2F6 antibody.



### Immunohistochemistry

**Image 3.** Immunohistochemistry analysis of paraffin-embedded human cervix carcinoma tissue using NR2F6 antibody.