

Datasheet for ABIN7184497  
**anti-PSMD2 antibody (N-Term)**[Go to Product page](#)

## 1 Image

## Overview

Quantity:	100 µL
Target:	PSMD2
Binding Specificity:	N-Term
Reactivity:	Human
Host:	Rabbit
Clonality:	Polyclonal
Conjugate:	This PSMD2 antibody is un-conjugated
Application:	Western Blotting (WB), ELISA

## Product Details

Immunogen:	Synthesized peptide derived from N-terminal of Human PSMD2.
Isotype:	IgG
Cross-Reactivity:	Human, Mouse, Rat
Purification:	The antibody was affinity-purified from rabbit antiserum by affinity-chromatography using epitope-specific immunogen.

## Target Details

Target:	PSMD2
Alternative Name:	PSMD2 ( <a href="#">PSMD2 Products</a> )
Background:	Background: Acts as a regulatory subunit of the 26 proteasome which is involved in the ATP-

## Target Details

dependent degradation of ubiquitinated proteins. Binds to the intracellular domain of tumor necrosis factor type 1 receptor. The binding domain of TRAP1 and TRAP2 resides outside the death domain of TNFR1.

Tsurumi C., Eur. J. Biochem. 239:912-921(1996).

The MGC Project Team, Genome Res. 14:2121-2127(2004).

Dunbar J.D., J. Immunol. 158:4252-4259(1997).

Aliases: 26S proteasome non-ATPase regulatory subunit 2 antibody, 26S proteasome regulatory subunit RPN1 antibody, 26S proteasome regulatory subunit S2 antibody, 26S proteasome subunit p97 antibody, 55.11 protein antibody, MGC14274 antibody, P97 antibody, Proteasome (prosome macropain) 26S subunit non ATPase 2 antibody, Proteasome 26S subunit, non-ATPase, 2 antibody, Proteasome 26S, subunit 2 antibody, Protein 55.11 antibody, Psmd2 antibody, PSMD2\_HUMAN antibody, Rpn1 antibody, S2 antibody, TNFR associated protein 2 antibody, TRAP2 antibody, Tumor necrosis factor receptor associated protein 2 antibody, Tumor necrosis factor type 1 receptor-associated protein 2 antibody

UniProt: [Q13200](#)

Pathways: [Mitotic G1-G1/S Phases](#), [DNA Replication](#), [Synthesis of DNA](#), [Ubiquitin Proteasome Pathway](#)

## Application Details

Application Notes: WB:1:500-1:3000,

Restrictions: For Research Use only

## Handling

Format: Liquid

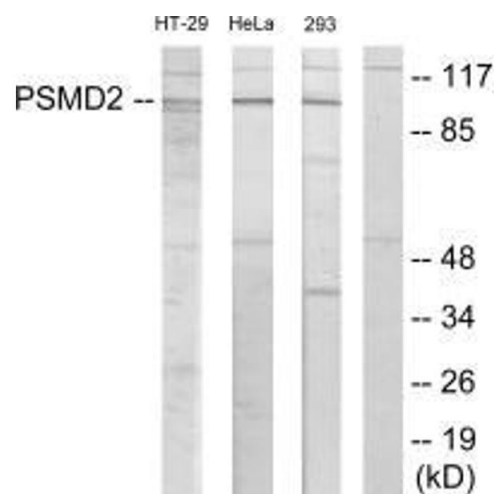
Buffer: Rabbit IgG in phosphate buffered saline (without Mg<sup>2+</sup> and Ca<sup>2+</sup>), pH 7.4, 150 mM NaCl, 0.02 % sodium azide and 50 % glycerol.

Preservative: Sodium azide

Precaution of Use: This product contains Sodium azide: a POISONOUS AND HAZARDOUS SUBSTANCE which should be handled by trained staff only.

Storage: -20 °C, -80 °C

Storage Comment: Upon receipt, store at -20°C or -80°C. Avoid repeated freeze.



Western Blotting

**Image 1.** Western blot analysis of extracts from HT-29 cells, HeLa cells and 293 cells, using PSMD2 antibody.