

Datasheet for ABIN7184523
anti-NLRX1 antibody (AA 581-630)

5 Images

[Go to Product page](#)

Overview

Quantity:	100 µg
Target:	NLRX1
Binding Specificity:	AA 581-630
Reactivity:	Human
Host:	Rabbit
Clonality:	Polyclonal
Conjugate:	This NLRX1 antibody is un-conjugated
Application:	Western Blotting (WB), ELISA

Product Details

Immunogen:	Synthesized peptide derived from NLRX1 at AA range: 581-630
Isotype:	IgG
Cross-Reactivity:	Human, Mouse, Rat
Purification:	The antibody was affinity-purified from rabbit antiserum by affinity-chromatography using epitope-specific immunogen.

Target Details

Target:	NLRX1
Alternative Name:	NLRX1 (NLRX1 Products)
Background:	Caterpillar protein 11.3 antibody, CLR11.3 antibody, DLNB26 antibody, FLJ21478 antibody,

Target Details

MGC131937 antibody, MGC21025 antibody, NLR family member X1 antibody, NLR family, X1 antibody, Nlrp1 antibody, NLRX1_HUMAN antibody, NOD-like receptor X1 antibody, NOD26 antibody, NOD5 antibody, NOD9 antibody, Nucleotide-binding oligomerization domain protein 26 antibody, Nucleotide-binding oligomerization domain protein 5 antibody, Nucleotide-binding oligomerization domain protein 9 antibody, nucleotide-binding oligomerization domain, leucine rich repeat containing X1 antibody, Protein Caterpillar 11.3 antibody

UniProt: [Q86UT6](#)

Pathways: [SARS-CoV-2 Protein Interactome](#)

Application Details

Application Notes: WB:1:500-2000, ELISA:1:10000-20000,

Restrictions: For Research Use only

Handling

Format: Liquid

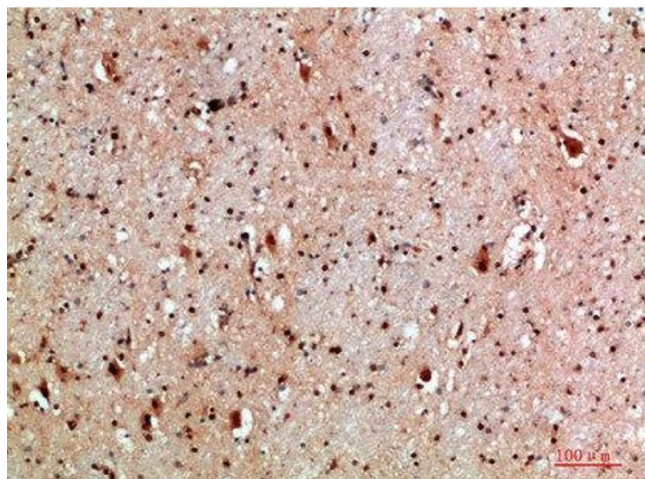
Buffer: Liquid in PBS containing 50 % glycerol, 0.5 % BSA and 0.02 % sodium azide.

Preservative: Sodium azide

Precaution of Use: This product contains Sodium azide: a POISONOUS AND HAZARDOUS SUBSTANCE which should be handled by trained staff only.

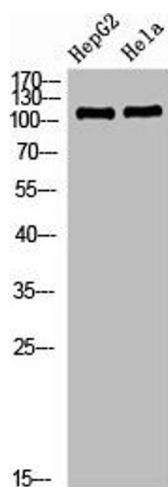
Storage: -20 °C, -80 °C

Storage Comment: Upon receipt, store at -20°C or -80°C. Avoid repeated freeze.



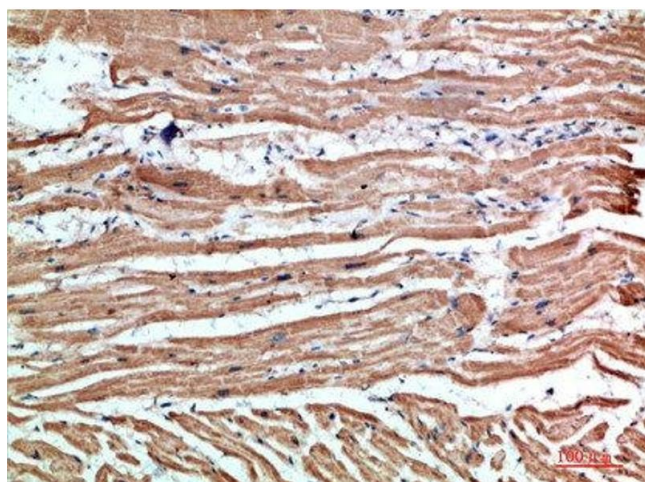
Immunohistochemistry

Image 1. Immunohistochemical analysis of paraffin-embedded human-brain, antibody was diluted at 1:200



Western Blotting

Image 2. Western Blot analysis of HEPG2 HeLa cells using NLRX1 Polyclonal Antibody diluted at 1:1000. Secondary antibody was diluted at 1:20000



Immunohistochemistry

Image 3. Immunohistochemical analysis of paraffin-embedded human-heart, antibody was diluted at 1:200

Please check the [product details page](#) for more images. Overall 5 images are available for ABIN7184523.