



Datasheet for ABIN7184530  
**anti-ADCY6 antibody (C-Term)**



[Go to Product page](#)

2 Images

Overview

Quantity:	100 µg
Target:	ADCY6
Binding Specificity:	C-Term
Reactivity:	Human
Host:	Rabbit
Clonality:	Polyclonal
Conjugate:	This ADCY6 antibody is un-conjugated
Application:	Western Blotting (WB), ELISA, Immunohistochemistry (IHC), Immunofluorescence (IF)

Product Details

Immunogen:	Synthesized peptide derived from the C-terminal region of Human A Cyclase V/VI.
Isotype:	IgG
Cross-Reactivity:	Human, Mouse, Rat
Purification:	The antibody was affinity-purified from rabbit antiserum by affinity-chromatography using epitope-specific immunogen.

Target Details

Target:	ADCY6
Alternative Name:	ADCY5/ADCY6 ( <a href="#">ADCY6 Products</a> )
Background:	ADCY5, Adenylate cyclase type 5, ATP pyrophosphate-lyase 5, Adenylate cyclase type V,

## Target Details

Adenylyl cyclase 5, ADCY6, KIAA0422, Adenylate cyclase type 6, ATP pyrophosphate-lyase 6, Adenylate cyclase type VI, Adenylyl cyclase 6, Ca(2+)-inhibitabl

UniProt: [O95622](#), [O43306](#)

Pathways: [EGFR Signaling Pathway](#), [Neurotrophin Signaling Pathway](#), [Thyroid Hormone Synthesis](#), [cAMP Metabolic Process](#), [Myometrial Relaxation and Contraction](#), [G-protein mediated Events](#), [Interaction of EGFR with phospholipase C-gamma](#)

## Application Details

Application Notes: WB:1:500-1:2000, IHC:1:100-1:300, IF:1:200-1:1000, ELISA:1:10000,

Restrictions: For Research Use only

## Handling

Format: Liquid

Buffer: Liquid in PBS containing 50 % glycerol, 0.5 % BSA and 0.02 % sodium azide.

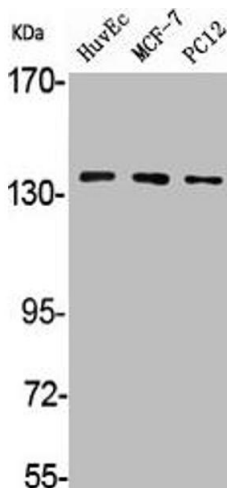
Preservative: Sodium azide

Precaution of Use: This product contains Sodium azide: a POISONOUS AND HAZARDOUS SUBSTANCE which should be handled by trained staff only.

Storage: -20 °C,-80 °C

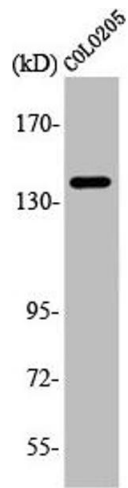
Storage Comment: Upon receipt, store at -20°C or -80°C. Avoid repeated freeze.

## Images



### Western Blotting

**Image 1.** Western Blot analysis of HuvEc MCF7 PC12 cells using A Cyclase V/VI Polyclonal Antibody



### Western Blotting

**Image 2.** Western Blot analysis of COLO205 cells using A Cyclase V/VI Polyclonal Antibody