

Datasheet for ABIN7184541

anti-Diazepam Binding Inhibitor antibody (C-Term)[Go to Product page](#)**1** Image

Overview

| | |
|----------------------|----------------------------------|
| Quantity: | 100 µg |
| Target: | Diazepam Binding Inhibitor (DBI) |
| Binding Specificity: | C-Term |
| Reactivity: | Human |
| Host: | Rabbit |
| Clonality: | Polyclonal |
| Application: | Western Blotting (WB), ELISA |

Product Details

| | |
|-------------------|---|
| Immunogen: | Synthesized peptide derived from the C-terminal region of Human ACBP. |
| Isotype: | IgG |
| Cross-Reactivity: | Human, Mouse, Rat |
| Purification: | The antibody was affinity-purified from rabbit antiserum by affinity-chromatography using epitope-specific immunogen. |

Target Details

| | |
|-------------------|---|
| Target: | Diazepam Binding Inhibitor (DBI) |
| Alternative Name: | DBI (DBI Products) |
| Background: | ACBD 1 antibody, ACBD1 antibody, ACBP antibody, ACBP_HUMAN antibody, Acyl CoA binding domain containing 1 antibody, Acyl CoA binding protein antibody, Acyl Coenzyme A binding domain containing 1 antibody, Acyl coenzyme A binding protein antibody, Acyl-CoA-binding |

Target Details

protein antibody, CCK RP antibody, CCKRP antibody, Cholecystokinin releasing peptide trypsin sensitive antibody, DBI antibody, Diazepam-binding inhibitor antibody, Endozepine antibody, EP antibody, GABA receptor modulator antibody, MGC70414 antibody

UniProt: [P07108](#)

Application Details

Application Notes: WB:1:500-1:2000, ELISA:1:20000,

Restrictions: For Research Use only

Handling

Format: Liquid

Buffer: Liquid in PBS containing 50 % glycerol, 0.5 % BSA and 0.02 % sodium azide.

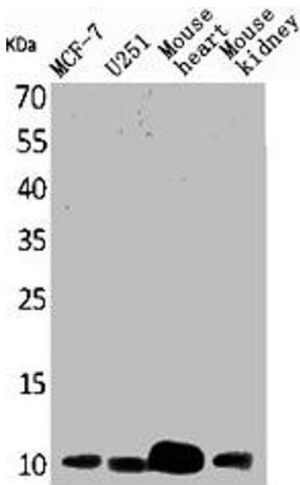
Preservative: Sodium azide

Precaution of Use: This product contains Sodium azide: a POISONOUS AND HAZARDOUS SUBSTANCE which should be handled by trained staff only.

Storage: -20 °C,-80 °C

Storage Comment: Upon receipt, store at -20°C or -80°C. Avoid repeated freeze.

Images



Western Blotting

Image 1. Western Blot analysis of MCF7 U251 mouse liver mouse kidney cells using ACBP Polyclonal Antibody