

Datasheet for ABIN7184620  
**anti-BCL2L2 antibody (C-Term)**



[Go to Product page](#)

1 Image

## Overview

Quantity:	100 µg
Target:	BCL2L2
Binding Specificity:	C-Term
Reactivity:	Human
Host:	Rabbit
Clonality:	Polyclonal
Conjugate:	This BCL2L2 antibody is un-conjugated
Application:	Western Blotting (WB), Immunohistochemistry (IHC), ELISA, Immunofluorescence (IF)

## Product Details

Immunogen:	Synthesized peptide derived from the C-terminal region of Human Bcl-w.
Isotype:	IgG
Cross-Reactivity:	Human, Mouse, Rat
Purification:	The antibody was affinity-purified from rabbit antiserum by affinity-chromatography using epitope-specific immunogen.

## Target Details

Target:	BCL2L2
Alternative Name:	BCL2L2 ( <a href="#">BCL2L2 Products</a> )
Background:	Apoptosis regulator BCL W antibody, Apoptosis regulator Bcl-W antibody, B2CL2_HUMAN

## Target Details

antibody, BCL 2 Like 2 antibody, Bcl 2 like 2 protein antibody, Bcl 2L2 antibody, BCL W antibody, Bcl-2-like protein 2 antibody, Bcl2 L2 antibody, BCL2 like 2 antibody, BCL2 like 2 protein antibody, Bcl2-L-2 antibody, Bcl2l2 antibody, BCLW antibody, KIAA0271 antibody, PPP1R51 antibody, Protein phosphatase 1 regulatory subunit 51 antibody

UniProt: [Q92843](#)

## Application Details

Application Notes: WB:1:500-1:2000, IHC:1:100-1:300, IF:1:200-1:1000, ELISA:1:10000,

Restrictions: For Research Use only

## Handling

Format: Liquid

Buffer: Liquid in PBS containing 50 % glycerol, 0.5 % BSA and 0.02 % sodium azide.

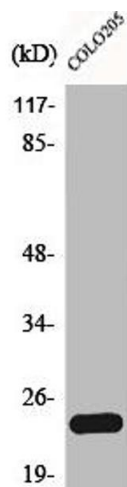
Preservative: Sodium azide

Precaution of Use: This product contains Sodium azide: a POISONOUS AND HAZARDOUS SUBSTANCE which should be handled by trained staff only.

Storage: -20 °C,-80 °C

Storage Comment: Upon receipt, store at -20°C or -80°C. Avoid repeated freeze.

## Images



### Western Blotting

**Image 1.** Western Blot analysis of COLO205 cells using Bcl-w Polyclonal Antibody