



[Go to Product page](#)

Datasheet for ABIN7184628
anti-ARFGEF2 antibody (C-Term)

1 Image

Overview

Quantity:	100 µg
Target:	ARFGEF2
Binding Specificity:	C-Term
Reactivity:	Human
Host:	Rabbit
Clonality:	Polyclonal
Conjugate:	This ARFGEF2 antibody is un-conjugated
Application:	ELISA, Western Blotting (WB), Immunohistochemistry (IHC), Immunofluorescence (IF)

Product Details

Immunogen:	Synthesized peptide derived from the C-terminal region of Human BIG2.
Isotype:	IgG
Cross-Reactivity:	Human, Mouse, Rat
Purification:	The antibody was affinity-purified from rabbit antiserum by affinity-chromatography using epitope-specific immunogen.

Target Details

Target:	ARFGEF2
Alternative Name:	ARFGEF2 (ARFGEF2 Products)
Background:	ARFGEF2 antibody, ARFGEP2 antibody, BIG2Brefeldin A-inhibited guanine nucleotide-exchange

Target Details

protein 2 antibody, Brefeldin A-inhibited GEP 2 antibody, ADP-ribosylation factor guanine nucleotide-exchange factor 2 antibody

UniProt: [Q9Y6D5](#)

Application Details

Application Notes: WB:1:500-1:2000, IHC:1:100-1:300, IF:1:200-1:1000, ELISA:1:20000,

Restrictions: For Research Use only

Handling

Format: Liquid

Buffer: Liquid in PBS containing 50 % glycerol, 0.5 % BSA and 0.02 % sodium azide.

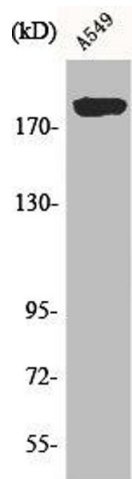
Preservative: Sodium azide

Precaution of Use: This product contains Sodium azide: a POISONOUS AND HAZARDOUS SUBSTANCE which should be handled by trained staff only.

Storage: -20 °C,-80 °C

Storage Comment: Upon receipt, store at -20°C or -80°C. Avoid repeated freeze.

Images



Western Blotting

Image 1. Western Blot analysis of A549 cells using BIG2 Polyclonal Antibody