

Datasheet for ABIN7184629
anti-BMP2 antibody (C-Term)[Go to Product page](#)

3 Images

Overview

Quantity:	100 µg
Target:	BMP2
Binding Specificity:	C-Term
Reactivity:	Human
Host:	Rabbit
Clonality:	Polyclonal
Conjugate:	This BMP2 antibody is un-conjugated
Application:	Western Blotting (WB), ELISA

Product Details

Immunogen:	Synthesized peptide derived from the C-terminal region of Human BMP-2.
Isotype:	IgG
Cross-Reactivity:	Human, Mouse, Rat
Purification:	The antibody was affinity-purified from rabbit antiserum by affinity-chromatography using epitope-specific immunogen.

Target Details

Target:	BMP2
Alternative Name:	BMP2 (BMP2 Products)
Background:	BDA2 antibody, BMP-2 antibody, BMP-2A antibody, Bmp2 antibody, BMP2_HUMAN antibody,

Target Details

BMP2A antibody, Bone morphogenetic protein 2 antibody, Bone morphogenetic protein 2A antibody

UniProt: [P12643](#)

Pathways: [Regulation of Hormone Metabolic Process](#), [Regulation of Hormone Biosynthetic Process](#), [Regulation of Muscle Cell Differentiation](#), [Growth Factor Binding](#), [Positive Regulation of fat Cell Differentiation](#)

Application Details

Application Notes: WB:1:500-1:2000, ELISA:1:10000,

Restrictions: For Research Use only

Handling

Format: Liquid

Buffer: Liquid in PBS containing 50 % glycerol, 0.5 % BSA and 0.02 % sodium azide.

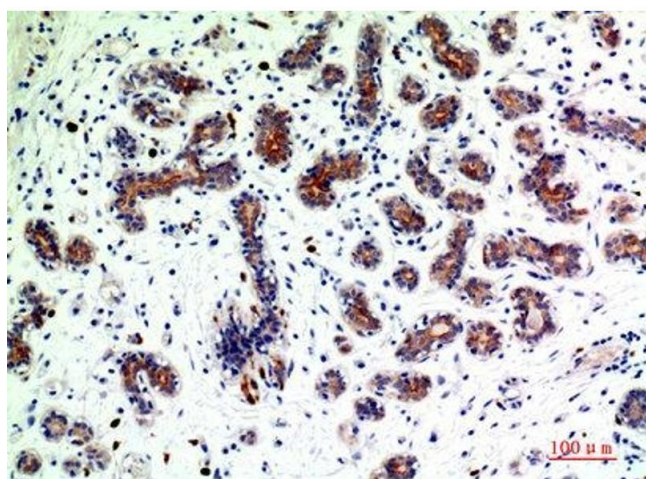
Preservative: Sodium azide

Precaution of Use: This product contains Sodium azide: a POISONOUS AND HAZARDOUS SUBSTANCE which should be handled by trained staff only.

Storage: -20 °C,-80 °C

Storage Comment: Upon receipt, store at -20°C or -80°C. Avoid repeated freeze.

Images



Immunohistochemistry

Image 1. Immunohistochemical analysis of paraffin-embedded human-breast-cancer, antibody was diluted at 1:200



Western Blotting

Image 2. Western Blot analysis of HEPG2-UV cells using BMP-2 Polyclonal Antibody

Western Blotting

Image 3. Western Blot analysis of HepG2-UV L929 cells using BMP-2 Polyclonal Antibody