



[Go to Product page](#)

Datasheet for ABIN7184648  
**anti-C1QL2 antibody (C-Term)**

1 Image

### Overview

Quantity:	100 µg
Target:	C1QL2
Binding Specificity:	C-Term
Reactivity:	Human
Host:	Rabbit
Clonality:	Polyclonal
Conjugate:	This C1QL2 antibody is un-conjugated
Application:	Western Blotting (WB), ELISA, Immunohistochemistry (IHC)

### Product Details

Immunogen:	Synthesized peptide derived from the C-terminal region of Human C1qL2.
Isotype:	IgG
Cross-Reactivity:	Human, Mouse
Purification:	The antibody was affinity-purified from rabbit antiserum by affinity-chromatography using epitope-specific immunogen.

### Target Details

Target:	C1QL2
Alternative Name:	C1QL2 ( <a href="#">C1QL2 Products</a> )
Background:	C1q and tumor necrosis factor related protein 10 antibody, C1q domain containing protein

## Target Details

antibody, C1QL2 antibody, C1QL2\_HUMAN antibody, C1QTNF10 antibody, Complement C1q-like protein 2 antibody, Complement component 1, q subcomponent-like 2 antibody, CTRP10 antibody, gliacolin like antibody

UniProt: [Q7Z5L3](#)

## Application Details

Application Notes: WB:1:500-1:2000, IHC:1:100-1:300, ELISA:1:10000,

Restrictions: For Research Use only

## Handling

Format: Liquid

Buffer: Liquid in PBS containing 50 % glycerol, 0.5 % BSA and 0.02 % sodium azide.

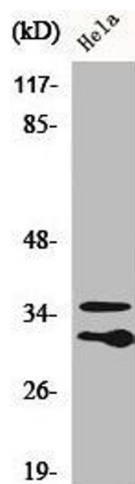
Preservative: Sodium azide

Precaution of Use: This product contains Sodium azide: a POISONOUS AND HAZARDOUS SUBSTANCE which should be handled by trained staff only.

Storage: -20 °C,-80 °C

Storage Comment: Upon receipt, store at -20°C or -80°C. Avoid repeated freeze.

## Images



### Western Blotting

**Image 1.** Western Blot analysis of HuvEc cells using C1qL2 Polyclonal Antibody