



[Go to Product page](#)

Datasheet for ABIN7184651
anti-CA2 antibody (C-Term)

1 Image

Overview

Quantity:	100 µg
Target:	CA2
Binding Specificity:	C-Term
Reactivity:	Human
Host:	Rabbit
Clonality:	Polyclonal
Conjugate:	This CA2 antibody is un-conjugated
Application:	Western Blotting (WB), Immunohistochemistry (IHC), ELISA

Product Details

Immunogen:	Synthesized peptide derived from the C-terminal region of Human CA II.
Isotype:	IgG
Cross-Reactivity:	Human, Rat
Purification:	The antibody was affinity-purified from rabbit antiserum by affinity-chromatography using epitope-specific immunogen.

Target Details

Target:	CA2
Alternative Name:	CA2 (CA2 Products)
Background:	CA 2 antibody, CA II antibody, CA-II antibody, Ca2 antibody, CAC antibody, CAH2_HUMAN

Target Details

antibody, CAII antibody, Car 2 antibody, Car2 antibody, Carbonate dehydratase II antibody, Carbonic anhydrase 2 antibody, Carbonic anhydrase B antibody, Carbonic anhydrase C antibody, Carbonic anhydrase C, formerly antibody, Carbonic anhydrase II antibody, Carbonic dehydratase antibody, epididymis luminal protein 76 antibody, Epididymis secretory protein Li 282 antibody, HEL-76 antibody, HEL-S-282 antibody

UniProt: [P00918](#)

Application Details

Application Notes: WB:1:500-1:2000, IHC:1:100-1:300, ELISA:1:40000,

Restrictions: For Research Use only

Handling

Format: Liquid

Buffer: Liquid in PBS containing 50 % glycerol, 0.5 % BSA and 0.02 % sodium azide.

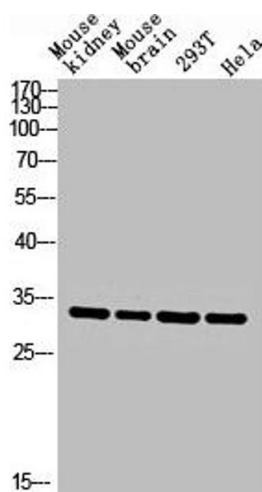
Preservative: Sodium azide

Precaution of Use: This product contains Sodium azide: a POISONOUS AND HAZARDOUS SUBSTANCE which should be handled by trained staff only.

Storage: -20 °C,-80 °C

Storage Comment: Upon receipt, store at -20°C or -80°C. Avoid repeated freeze.

Images



Western Blotting

Image 1. Western blot analysis of Mouse-kidney mouse-brain 293T hela lysis using CA II antibody.