



[Go to Product page](#)

Datasheet for ABIN7184674
anti-JUP antibody (C-Term)

2 Images

Overview

Quantity:	100 µg
Target:	JUP
Binding Specificity:	C-Term
Reactivity:	Human
Host:	Rabbit
Clonality:	Polyclonal
Conjugate:	This JUP antibody is un-conjugated
Application:	Western Blotting (WB), Immunofluorescence (IF), Immunohistochemistry (IHC), ELISA

Product Details

Immunogen:	Synthesized peptide derived from the C-terminal region of Human Catenin-gamma.
Isotype:	IgG
Cross-Reactivity:	Human, Mouse, Rat
Purification:	The antibody was affinity-purified from rabbit antiserum by affinity-chromatography using epitope-specific immunogen.

Target Details

Target:	JUP
Alternative Name:	JUP (JUP Products)
Background:	ARVD 12 antibody, ARVD12 antibody, Catenin (cadherin associated protein), gamma 80 kDa

Target Details

antibody, catenin (cadherin-associated protein) gamma (80kD) antibody, Catenin gamma antibody, CTNNG antibody, Desmoplakin 3 antibody, Desmoplakin III antibody, Desmoplakin-3 antibody, Desmoplakin3 antibody, DesmoplakinIII antibody, DP 3 antibody, DP III antibody, DP3 antibody, DPIII antibody, gamma catenin antibody, Junction plakoglobin antibody, JUP antibody, OTTHUMP00000164732 antibody, OTTHUMP00000164735 antibody, OTTHUMP00000164738 antibody, PDGB antibody, PKGB antibody, PLAK_HUMAN antibody, PLAKOGLOBIN antibody

UniProt: [P14923](#)

Pathways: [Cell-Cell Junction Organization, Maintenance of Protein Location](#)

Application Details

Application Notes: WB:1:500-1:2000, IHC:1:100-1:300, IF:1:200-1:1000, ELISA:1:20000,

Restrictions: For Research Use only

Handling

Format: Liquid

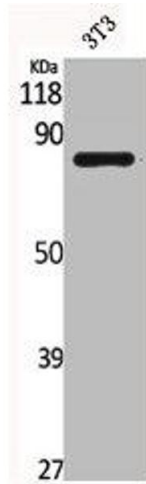
Buffer: Liquid in PBS containing 50 % glycerol, 0.5 % BSA and 0.02 % sodium azide.

Preservative: Sodium azide

Precaution of Use: This product contains Sodium azide: a POISONOUS AND HAZARDOUS SUBSTANCE which should be handled by trained staff only.

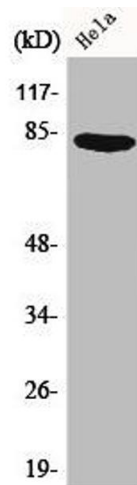
Storage: -20 °C, -80 °C

Storage Comment: Upon receipt, store at -20°C or -80°C. Avoid repeated freeze.



Western Blotting

Image 1. Western Blot analysis of NIH-3T3 cells using Catenin- γ Polyclonal Antibody



Western Blotting

Image 2. Western Blot analysis of HeLa cells using Catenin- γ Polyclonal Antibody